

# alpha 1 Fetoprotein Rabbit mAb

Catalog # AP77628

## Product Information

---

<b>Application</b>	WB, IHC-P, IF, FC, ICC, IP
<b>Primary Accession</b>	<a href="#">P02771</a>
<b>Reactivity</b>	Human
<b>Host</b>	Rabbit
<b>Clonality</b>	Monoclonal Antibody
<b>Isotype</b>	IgG
<b>Conjugate</b>	Unconjugated
<b>Immunogen</b>	A synthesized peptide derived from human AFP
<b>Purification</b>	Affinity Chromatography
<b>Calculated MW</b>	68678

## Additional Information

---

<b>Gene ID</b>	174
<b>Other Names</b>	AFP
<b>Dilution</b>	WB~~1/500-1/1000 IHC-P~~N/A IF~~1:50~200 FC~~1:10~50 ICC~~N/A IP~~N/A
<b>Format</b>	Liquid in 10mM PBS, pH 7.4, 150mM sodium chloride, 0.05% BSA, 0.02% sodium azide and 50% glycerol.
<b>Storage</b>	Store at 4°C short term. Aliquot and store at -20°C long term. Avoid freeze/thaw cycles.

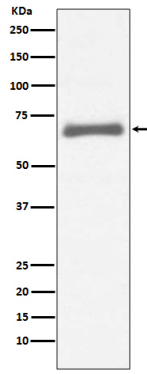
## Protein Information

---

<b>Name</b>	AFP
<b>Synonyms</b>	HPAFP
<b>Function</b>	Binds copper, nickel, and fatty acids as well as, and bilirubin less well than, serum albumin. Only a small percentage (less than 2%) of the human AFP shows estrogen-binding properties.
<b>Cellular Location</b>	Secreted.
<b>Tissue Location</b>	Plasma. Synthesized by the fetal liver and yolk sac

## Images

---



Please note: All products are 'FOR RESEARCH USE ONLY. NOT FOR USE IN DIAGNOSTIC OR THERAPEUTIC PROCEDURES'.