

# Chromogranin A Rabbit mAb

Catalog # AP77626

## Product Information

<b>Application</b>	WB, IHC-P, IF, FC, ICC
<b>Primary Accession</b>	<a href="#">P10645</a>
<b>Reactivity</b>	Human
<b>Host</b>	Rabbit
<b>Clonality</b>	Monoclonal Antibody
<b>Isotype</b>	IgG
<b>Conjugate</b>	Unconjugated
<b>Immunogen</b>	A synthesized peptide derived from human Chromogranin A
<b>Purification</b>	Affinity Chromatography
<b>Calculated MW</b>	50688

## Additional Information

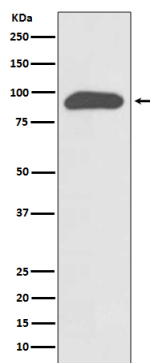
<b>Gene ID</b>	1113
<b>Other Names</b>	CHGA
<b>Dilution</b>	WB~~1/500-1/1000 IHC-P~~N/A IF~~1:50~200 FC~~1:10~50 ICC~~N/A
<b>Format</b>	Liquid in 10mM PBS, pH 7.4, 150mM sodium chloride, 0.05% BSA, 0.02% sodium azide and 50% glycerol.
<b>Storage</b>	Store at 4°C short term. Aliquot and store at -20°C long term. Avoid freeze/thaw cycles.

## Protein Information

<b>Name</b>	CHGA
<b>Function</b>	[Pancreastatin]: Strongly inhibits glucose induced insulin release from the pancreas. [Serpinin]: Regulates granule biogenesis in endocrine cells by up-regulating the transcription of protease nexin 1 (SERPINE2) via a cAMP-PKA-SP1 pathway. This leads to inhibition of granule protein degradation in the Golgi complex which in turn promotes granule formation.
<b>Cellular Location</b>	[Serpinin]: Secreted {ECO:0000250 UniProtKB:P26339}. Cytoplasmic vesicle, secretory vesicle {ECO:0000250 UniProtKB:P26339}. Note=Pyroglutaminated serpinin localizes to secretory vesicle. {ECO:0000250 UniProtKB:P26339}
<b>Tissue Location</b>	Detected in cerebrospinal fluid (at protein level) (PubMed:25326458). Detected in urine (at protein level) (PubMed:37453717).

## Images

---



Please note: All products are 'FOR RESEARCH USE ONLY. NOT FOR USE IN DIAGNOSTIC OR THERAPEUTIC PROCEDURES'.