

Vitamin D Binding Protein Rabbit mAb

Catalog # AP77624

Product Information

Application	WB, IHC-P, IF, FC, ICC
Primary Accession	P02774
Reactivity	Human
Host	Rabbit
Clonality	Monoclonal Antibody
Isotype	IgG
Conjugate	Unconjugated
Immunogen	A synthesized peptide derived from human GC / VDBP
Purification	Affinity Chromatography
Calculated MW	52918

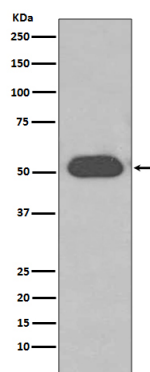
Additional Information

Gene ID	2638
Other Names	GC
Dilution	WB~~1/500-1/1000 IHC-P~~N/A IF~~1:50~200 FC~~1:10~50 ICC~~N/A
Format	Liquid in 10mM PBS, pH 7.4, 150mM sodium chloride, 0.05% BSA, 0.02% sodium azide and 50% glycerol.
Storage	Store at 4°C short term. Aliquot and store at -20°C long term. Avoid freeze/thaw cycles.

Protein Information

Name	GC
Function	Involved in vitamin D transport and storage, scavenging of extracellular G-actin, enhancement of the chemotactic activity of C5 alpha for neutrophils in inflammation and macrophage activation.
Cellular Location	Secreted.
Tissue Location	Expressed in the liver. Found in plasma, ascites, cerebrospinal fluid and urine.

Images



Please note: All products are 'FOR RESEARCH USE ONLY. NOT FOR USE IN DIAGNOSTIC OR THERAPEUTIC PROCEDURES'.