

Dystrophin Rabbit mAb

Catalog # AP77616

Product Information

Application	WB
Primary Accession	P11532
Reactivity	Rat, Human, Mouse
Host	Rabbit
Clonality	Monoclonal Antibody
Isotype	IgG
Conjugate	Unconjugated
Immunogen	A synthesized peptide derived from human Dystrophin
Purification	Affinity Chromatography
Calculated MW	426778

Additional Information

Gene ID	1756
Other Names	DMD
Dilution	WB~~1/500-1/1000
Format	Liquid in 10mM PBS, pH 7.4, 150mM sodium chloride, 0.05% BSA, 0.02% sodium azide and 50% glycerol.
Storage	Store at 4°C short term. Aliquot and store at -20°C long term. Avoid freeze/thaw cycles.

Protein Information

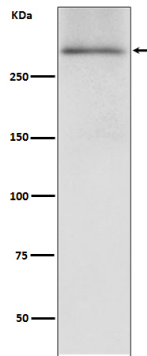
Name	DMD (HGNC:2928)
Function	Anchors the extracellular matrix to the cytoskeleton via F- actin. Ligand for dystroglycan. Component of the dystrophin-associated glycoprotein complex which accumulates at the neuromuscular junction (NMJ) and at a variety of synapses in the peripheral and central nervous systems and has a structural function in stabilizing the sarcolemma. Also implicated in signaling events and synaptic transmission.
Cellular Location	Cell membrane, sarcolemma {ECO:0000250 UniProtKB:P11531}; Peripheral membrane protein {ECO:0000250 UniProtKB:P11531}; Cytoplasmic side {ECO:0000250 UniProtKB:P11531}. Cytoplasm, cytoskeleton {ECO:0000250 UniProtKB:P11531}. Postsynaptic cell membrane {ECO:0000250 UniProtKB:P11531}. Note=In muscle cells, sarcolemma localization requires the presence of ANK2, while localization to costameres requires the presence of ANK3. Localizes to neuromuscular junctions (NMJs).

In adult muscle, NMJ localization depends upon ANK2 presence, but not in newborn animals. {ECO:0000250|UniProtKB:P11531}

Tissue Location

Expressed in muscle fibers accumulating in the costameres of myoplasm at the sarcolemma. Expressed in brain, muscle, kidney, lung and testis. Most tissues contain transcripts of multiple isoforms. Isoform 15: Only isoform to be detected in heart and liver and is also expressed in brain, testis and hepatoma cells

Images



Please note: All products are 'FOR RESEARCH USE ONLY. NOT FOR USE IN DIAGNOSTIC OR THERAPEUTIC PROCEDURES'.