

# PDIA6 Rabbit mAb

Catalog # AP77604

## Product Information

---

|                          |  |
|--------------------------|--|
| <b>Application</b>       | WB, IF, FC, ICC                                |
| <b>Primary Accession</b> | <a href="#">Q15084</a>                         |
| <b>Reactivity</b>        | Rat, Human, Mouse                              |
| <b>Host</b>              | Rabbit   |
| <b>Clonality</b>         | Monoclonal Antibody                            |
| <b>Isotype</b>           | IgG  |
| <b>Conjugate</b>         | Unconjugated                                   |
| <b>Immunogen</b>         | A synthesized peptide derived from human PDIA6 |
| <b>Purification</b>      | Affinity Chromatography                        |
| <b>Calculated MW</b>     | 48 KDa   |

## Additional Information

---

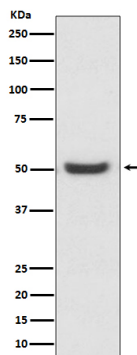
|                    |  |
|--------------------|--|
| <b>Other Names</b> | PDIA6  |
| <b>Dilution</b>    | WB~~1/500-1/1000 IF~~1:50~200 FC~~1:10~50 ICC~~N/A   |
| <b>Format</b>      | Liquid in 10mM PBS, pH 7.4, 150mM sodium chloride, 0.05% BSA, 0.02% sodium azide and 50% glycerol. |
| <b>Storage</b>     | Store at 4°C short term. Aliquot and store at -20°C long term. Avoid freeze/thaw cycles.           |

## Protein Information

---

## Images

---



Please note: All products are 'FOR RESEARCH USE ONLY. NOT FOR USE IN DIAGNOSTIC OR THERAPEUTIC PROCEDURES'.