

CDC5 Rabbit mAb

Catalog # AP77572

Product Information

Application	WB, IHC-P, IF, ICC
Primary Accession	Q99459
Reactivity	Rat, Human, Mouse
Host	Rabbit
Clonality	Monoclonal Antibody
Isotype	IgG
Conjugate	Unconjugated
Immunogen	A synthesized peptide derived from human CDC5
Purification	Affinity Chromatography
Calculated MW	92251

Additional Information

Gene ID	988
Other Names	CDC5L
Dilution	WB~~1/500-1/1000 IHC-P~~N/A IF~~1:50~200 ICC~~N/A
Format	Liquid in 10mM PBS, pH 7.4, 150mM sodium chloride, 0.05% BSA, 0.02% sodium azide and 50% glycerol.
Storage	Store at 4°C short term. Aliquot and store at -20°C long term. Avoid freeze/thaw cycles.

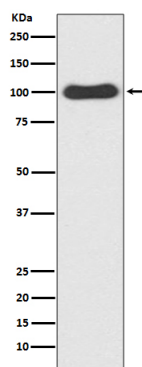
Protein Information

Name	CDC5L
Synonyms	KIAA0432, PCDC5RP
Function	DNA-binding protein involved in cell cycle control. May act as a transcription activator. Plays a role in pre-mRNA splicing as core component of precatalytic, catalytic and postcatalytic spliceosomal complexes (PubMed: 11991638 , PubMed: 20176811 , PubMed: 28076346 , PubMed: 28502770 , PubMed: 29301961 , PubMed: 29360106 , PubMed: 29361316 , PubMed: 30705154 , PubMed: 30728453). Component of the PRP19-CDC5L complex that forms an integral part of the spliceosome and is required for activating pre-mRNA splicing. The PRP19-CDC5L complex may also play a role in the response to DNA damage (DDR) (PubMed: 20176811). As a component of the minor spliceosome, involved in the splicing of U12- type introns in pre-mRNAs (Probable).

Cellular Location Nucleus. Nucleus speckle. Cytoplasm Note=May shuttle between cytoplasm and nucleus

Tissue Location Ubiquitously expressed in both fetal and adult tissues.

Images



Please note: All products are 'FOR RESEARCH USE ONLY. NOT FOR USE IN DIAGNOSTIC OR THERAPEUTIC PROCEDURES'.