

FANCD2 Rabbit mAb

Catalog # AP77530

Product Information

Application	WB, IHC-P, IF, ICC, IP
Primary Accession	Q9BXW9
Reactivity	Rat, Human, Mouse
Host	Rabbit
Clonality	Monoclonal Antibody
Isotype	IgG
Conjugate	Unconjugated
Immunogen	A synthesized peptide derived from human FANCD2
Purification	Affinity Chromatography
Calculated MW	164128

Additional Information

Gene ID	2177
Other Names	FANCD2
Dilution	WB~~1/500-1/1000 IHC-P~~N/A IF~~1:50~200 ICC~~N/A IP~~N/A
Format	Liquid in 10mM PBS, pH 7.4, 150mM sodium chloride, 0.05% BSA, 0.02% sodium azide and 50% glycerol.
Storage	Store at 4°C short term. Aliquot and store at -20°C long term. Avoid freeze/thaw cycles.

Protein Information

Name	FANCD2
Synonyms	FACD
Function	Required for maintenance of chromosomal stability (PubMed: 11239453 , PubMed: 14517836). Promotes accurate and efficient pairing of homologs during meiosis (PubMed: 14517836). Involved in the repair of DNA double-strand breaks, both by homologous recombination and single-strand annealing (PubMed: 15671039 , PubMed: 15650050 , PubMed: 30335751 , PubMed: 36385258). The FANCI-FANCD2 complex binds and scans double-stranded DNA (dsDNA) for DNA damage; this complex stalls at DNA junctions between double-stranded DNA and single-stranded DNA (By similarity). May participate in S phase and G2 phase checkpoint activation upon DNA damage (PubMed: 15377654). Plays a role in preventing breakage and loss of missegregating chromatin at the end of cell division, particularly after replication stress (PubMed: 15454491 , PubMed: 15661754). Required for

the targeting, or stabilization, of BLM to non-centromeric abnormal structures induced by replicative stress (PubMed:[15661754](#), PubMed:[19465921](#)). Promotes BRCA2/FANCD1 loading onto damaged chromatin (PubMed:[11239454](#), PubMed:[12239151](#), PubMed:[12086603](#), PubMed:[15115758](#), PubMed:[15199141](#), PubMed:[15671039](#), PubMed:[18212739](#)). May also be involved in B-cell immunoglobulin isotype switching.

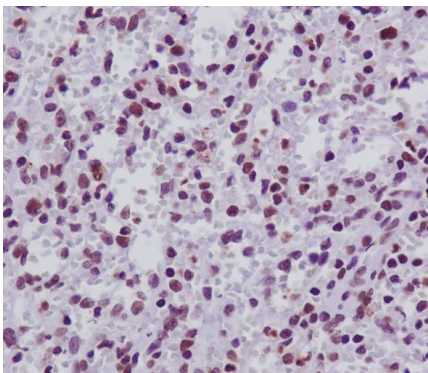
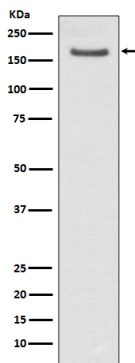
Cellular Location

Nucleus Note=Concentrates in nuclear foci during S phase and upon genotoxic stress. At the onset of mitosis, excluded from chromosomes and diffuses into the cytoplasm, returning to the nucleus at the end of cell division. Observed in a few spots localized in pairs on the sister chromatids of mitotic chromosome arms and not centromeres, one on each chromatids. These foci coincide with common fragile sites and could be sites of replication fork stalling. The foci are frequently interlinked through BLM-associated ultra-fine DNA bridges. Following aphidicolin treatment, targets chromatid gaps and breaks

Tissue Location

Highly expressed in germinal center cells of the spleen, tonsil, and reactive lymph nodes, and in the proliferating basal layer of squamous epithelium of tonsil, esophagus, oropharynx, larynx and cervix. Expressed in cytotrophoblastic cells of the placenta and exocrine cells of the pancreas (at protein level). Highly expressed in testis, where expression is restricted to maturing spermatocytes

Images



Please note: All products are 'FOR RESEARCH USE ONLY. NOT FOR USE IN DIAGNOSTIC OR THERAPEUTIC PROCEDURES'.