

# Mucin 16 Rabbit mAb

Catalog # AP77525

## Product Information

---

<b>Application</b>	WB, IF, FC, ICC
<b>Primary Accession</b>	<a href="#">Q8WXI7</a>
<b>Reactivity</b>	Human
<b>Host</b>	Rabbit
<b>Clonality</b>	Monoclonal Antibody
<b>Isotype</b>	IgG
<b>Conjugate</b>	Unconjugated
<b>Immunogen</b>	A synthesized peptide derived from human MUC16
<b>Purification</b>	Affinity Chromatography
<b>Calculated MW</b>	1519175

## Additional Information

---

<b>Gene ID</b>	94025
<b>Other Names</b>	MUC16
<b>Dilution</b>	WB~~1/500-1/1000 IF~~1:50~200 FC~~1:10~50 ICC~~N/A
<b>Format</b>	Liquid in 10mM PBS, pH 7.4, 150mM sodium chloride, 0.05% BSA, 0.02% sodium azide and 50% glycerol.
<b>Storage</b>	Store at 4°C short term. Aliquot and store at -20°C long term. Avoid freeze/thaw cycles.

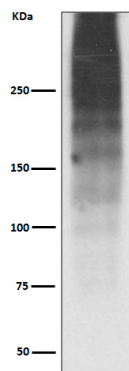
## Protein Information

---

<b>Name</b>	MUC16 ( <a href="#">HGNC:15582</a> )
<b>Function</b>	Thought to provide a protective, lubricating barrier against particles and infectious agents at mucosal surfaces.
<b>Cellular Location</b>	Cell membrane; Single-pass type I membrane protein. Secreted, extracellular space. Note=May be liberated into the extracellular space following the phosphorylation of the intracellular C-terminus which induces the proteolytic cleavage and liberation of the extracellular domain
<b>Tissue Location</b>	Expressed in corneal and conjunctival epithelia (at protein level). Overexpressed in ovarian carcinomas and ovarian low malignant potential (LMP) tumors as compared to the expression in normal ovarian tissue and ovarian adenomas

## Images

---



Please note: All products are 'FOR RESEARCH USE ONLY. NOT FOR USE IN DIAGNOSTIC OR THERAPEUTIC PROCEDURES'.