

# Jagged 1 Rabbit mAb

Catalog # AP77521

## Product Information

---

<b>Application</b>	WB, IHC-P, IF, ICC
<b>Primary Accession</b>	<a href="#">P78504</a>
<b>Reactivity</b>	Human
<b>Host</b>	Rabbit
<b>Clonality</b>	Monoclonal Antibody
<b>Isotype</b>	IgG
<b>Conjugate</b>	Unconjugated
<b>Immunogen</b>	A synthesized peptide derived from human JAG1
<b>Purification</b>	Affinity Chromatography
<b>Calculated MW</b>	133799

## Additional Information

---

<b>Gene ID</b>	182
<b>Other Names</b>	JAG1
<b>Dilution</b>	WB~~1/500-1/1000 IHC-P~~N/A IF~~1:50~200 ICC~~N/A
<b>Format</b>	Liquid in 10mM PBS, pH 7.4, 150mM sodium chloride, 0.05% BSA, 0.02% sodium azide and 50% glycerol.
<b>Storage</b>	Store at 4°C short term. Aliquot and store at -20°C long term. Avoid freeze/thaw cycles.

## Protein Information

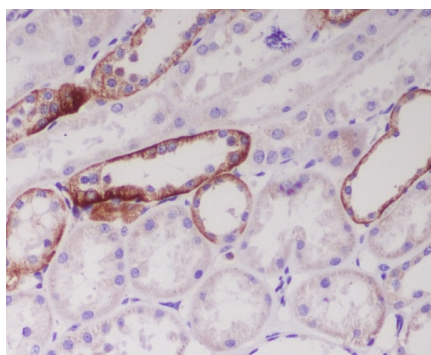
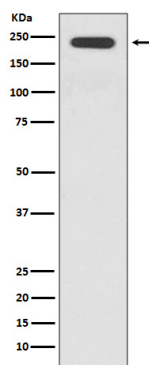
---

<b>Name</b>	JAG1
<b>Synonyms</b>	JAGL1
<b>Function</b>	Ligand for multiple Notch receptors and involved in the mediation of Notch signaling (PubMed: <a href="#">18660822</a> , PubMed: <a href="#">20437614</a> ). May be involved in cell-fate decisions during hematopoiesis (PubMed: <a href="#">9462510</a> ). Seems to be involved in early and late stages of mammalian cardiovascular development. Inhibits myoblast differentiation (By similarity). Enhances fibroblast growth factor-induced angiogenesis (in vitro).
<b>Cellular Location</b>	Membrane; Single-pass type I membrane protein. Cell membrane
<b>Tissue Location</b>	Widely expressed in adult and fetal tissues. In cervix epithelium expressed in undifferentiated subcolumnar reserve cells and squamous metaplasia. Expression is up-regulated in cervical squamous cell carcinoma. Expressed in

bone marrow cell line HS-27a which supports the long-term maintenance of immature progenitor cells

## Images

---



Please note: All products are 'FOR RESEARCH USE ONLY. NOT FOR USE IN DIAGNOSTIC OR THERAPEUTIC PROCEDURES'.