

Musashi 2 Rabbit mAb

Catalog # AP77490

Product Information

Application	WB, IHC-P, IF, FC, ICC
Primary Accession	Q96DH6
Reactivity	Rat, Human, Mouse
Host	Rabbit
Clonality	Monoclonal Antibody
Isotype	IgG
Conjugate	Unconjugated
Immunogen	A synthesized peptide derived from human MSI2
Purification	Affinity Chromatography
Calculated MW	35197

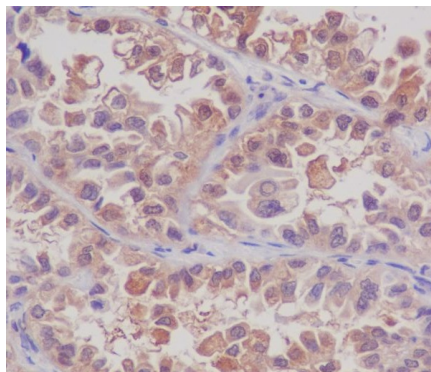
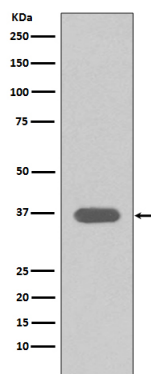
Additional Information

Gene ID	124540
Other Names	MSI2
Dilution	WB~~1/500-1/1000 IHC-P~~N/A IF~~1:50~200 FC~~1:10~50 ICC~~N/A
Format	Liquid in 10mM PBS, pH 7.4, 150mM sodium chloride, 0.05% BSA, 0.02% sodium azide and 50% glycerol.
Storage	Store at 4°C short term. Aliquot and store at -20°C long term. Avoid freeze/thaw cycles.

Protein Information

Name	MSI2
Function	RNA binding protein that regulates the expression of target mRNAs at the translation level. May play a role in the proliferation and maintenance of stem cells in the central nervous system (By similarity).
Cellular Location	Cytoplasm. Note=Associated with polysomes.
Tissue Location	Ubiquitous; detected at low levels.

Images



Please note: All products are 'FOR RESEARCH USE ONLY. NOT FOR USE IN DIAGNOSTIC OR THERAPEUTIC PROCEDURES'.