

# KMT4 Rabbit mAb

Catalog # AP77447

## Product Information

---

<b>Application</b>	WB
<b>Primary Accession</b>	<a href="#">Q8TEK3</a>
<b>Reactivity</b>	Human, Mouse
<b>Host</b>	Rabbit
<b>Clonality</b>	Monoclonal Antibody
<b>Isotype</b>	IgG
<b>Conjugate</b>	Unconjugated
<b>Immunogen</b>	A synthesized peptide derived from human KMT4 / Dot1L
<b>Purification</b>	Affinity Chromatography
<b>Calculated MW</b>	164856

## Additional Information

---

<b>Gene ID</b>	84444
<b>Other Names</b>	DOT1L
<b>Dilution</b>	WB~~1/500-1/1000
<b>Format</b>	Liquid in 10mM PBS, pH 7.4, 150mM sodium chloride, 0.05% BSA, 0.02% sodium azide and 50% glycerol.
<b>Storage</b>	Store at 4°C short term. Aliquot and store at -20°C long term. Avoid freeze/thaw cycles.

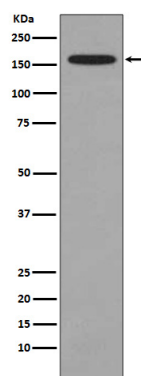
## Protein Information

---

<b>Name</b>	DOT1L ( <a href="#">HGNC:24948</a> )
<b>Synonyms</b>	KIAA1814, KMT4
<b>Function</b>	Histone methyltransferase. Methylates 'Lys-79' of histone H3. Nucleosomes are preferred as substrate compared to free histones (PubMed: <a href="#">12123582</a> ). Binds to DNA (PubMed: <a href="#">12628190</a> ).
<b>Cellular Location</b>	Nucleus.

## Images

---



Please note: All products are 'FOR RESEARCH USE ONLY. NOT FOR USE IN DIAGNOSTIC OR THERAPEUTIC PROCEDURES'.