

CETP Rabbit mAb

Catalog # AP77445

Product Information

Application	WB, IP
Primary Accession	P11597
Reactivity	Human
Host	Rabbit
Clonality	Monoclonal Antibody
Isotype	IgG
Conjugate	Unconjugated
Immunogen	A synthesized peptide derived from human CETP
Purification	Affinity Chromatography
Calculated MW	54756

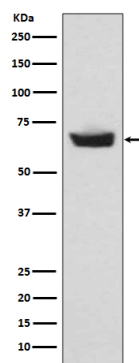
Additional Information

Gene ID	1071
Other Names	CETP
Dilution	WB~~1/500-1/1000 IP~~N/A
Format	Liquid in 10mM PBS, pH 7.4, 150mM sodium chloride, 0.05% BSA, 0.02% sodium azide and 50% glycerol.
Storage	Store at 4°C short term. Aliquot and store at -20°C long term. Avoid freeze/thaw cycles.

Protein Information

Name	CETP (HGNC:1869)
Function	Involved in the transfer of neutral lipids, including cholesteryl ester and triglyceride, among lipoprotein particles. Allows the net movement of cholesteryl ester from high density lipoproteins/HDL to triglyceride-rich very low density lipoproteins/VLDL, and the equimolar transport of triglyceride from VLDL to HDL (PubMed: 24293641 , PubMed: 3281933 , PubMed: 3600759). Regulates the reverse cholesterol transport, by which excess cholesterol is removed from peripheral tissues and returned to the liver for elimination (PubMed: 17237796).
Cellular Location	Secreted. Note=Secreted in plasma
Tissue Location	Expressed by the liver and secreted in plasma.

Images



Please note: All products are 'FOR RESEARCH USE ONLY. NOT FOR USE IN DIAGNOSTIC OR THERAPEUTIC PROCEDURES'.