

Integrin alpha X Rabbit mAb

Catalog # AP77431

Product Information

Application	WB, IHC-P, IF, ICC, IP
Primary Accession	P20702
Reactivity	Human
Host	Rabbit
Clonality	Monoclonal Antibody
Isotype	IgG
Conjugate	Unconjugated
Immunogen	A synthesized peptide derived from human CD11c
Purification	Affinity Chromatography
Calculated MW	127829

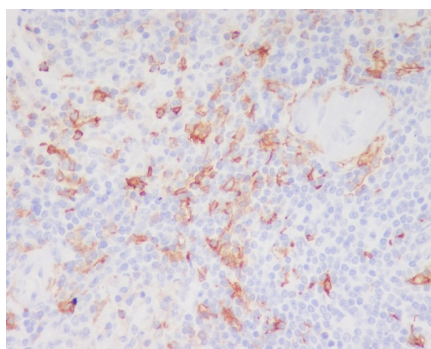
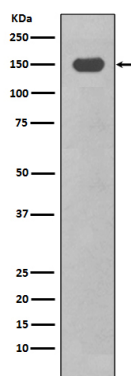
Additional Information

Gene ID	3687
Other Names	ITGAX
Dilution	WB~~1/500-1/1000 IHC-P~~N/A IF~~1:50~200 ICC~~N/A IP~~N/A
Format	Liquid in 10mM PBS, pH 7.4, 150mM sodium chloride, 0.05% BSA, 0.02% sodium azide and 50% glycerol.
Storage	Store at 4°C short term. Aliquot and store at -20°C long term. Avoid freeze/thaw cycles.

Protein Information

Name	ITGAX
Synonyms	CD11C
Function	Integrin alpha-X/beta-2 is a receptor for fibrinogen. It recognizes the sequence G-P-R in fibrinogen. It mediates cell-cell interaction during inflammatory responses. It is especially important in monocyte adhesion and chemotaxis.
Cellular Location	Membrane; Single-pass type I membrane protein.
Tissue Location	Predominantly expressed in monocytes and granulocytes

Images



Please note: All products are 'FOR RESEARCH USE ONLY. NOT FOR USE IN DIAGNOSTIC OR THERAPEUTIC PROCEDURES'.