

# Torsin 1A Rabbit mAb

Catalog # AP77428

## Product Information

---

<b>Application</b>	WB, FC
<b>Primary Accession</b>	<a href="#">O14656</a>
<b>Reactivity</b>	Human
<b>Host</b>	Rabbit
<b>Clonality</b>	Monoclonal Antibody
<b>Isotype</b>	IgG
<b>Conjugate</b>	Unconjugated
<b>Immunogen</b>	A synthesized peptide derived from human Torsin A
<b>Purification</b>	Affinity Chromatography
<b>Calculated MW</b>	37809

## Additional Information

---

<b>Gene ID</b>	1861
<b>Other Names</b>	TOR1A
<b>Dilution</b>	WB~~1/500-1/1000 FC~~1:10~50
<b>Format</b>	Liquid in 10mM PBS, pH 7.4, 150mM sodium chloride, 0.05% BSA, 0.02% sodium azide and 50% glycerol.
<b>Storage</b>	Store at 4°C short term. Aliquot and store at -20°C long term. Avoid freeze/thaw cycles.

## Protein Information

---

<b>Name</b>	TOR1A
<b>Synonyms</b>	DQ2, DYT1, TA, TORA
<b>Function</b>	Protein with chaperone functions important for the control of protein folding, processing, stability and localization as well as for the reduction of misfolded protein aggregates. Involved in the regulation of synaptic vesicle recycling, controls STON2 protein stability in collaboration with the COP9 signalosome complex (CSN). In the nucleus, may link the cytoskeleton with the nuclear envelope, this mechanism seems to be crucial for the control of nuclear polarity, cell movement and, specifically in neurons, nuclear envelope integrity. Participates in the cellular trafficking and may regulate the subcellular location of multipass membrane proteins such as the dopamine transporter SLC6A3, leading to the modulation of dopamine neurotransmission. In the endoplasmic reticulum, plays a role in the quality control of protein folding by increasing clearance of misfolded proteins such

as SGCE variants or holding them in an intermediate state for proper refolding. May have a redundant function with TOR1B in non- neural tissues.

### Cellular Location

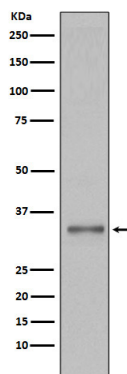
Endoplasmic reticulum lumen. Nucleus membrane; Peripheral membrane protein. Cell projection, growth cone. Cytoplasmic vesicle membrane. Cytoplasmic vesicle, secretory vesicle. Cytoplasmic vesicle, secretory vesicle, synaptic vesicle. Cytoplasm, cytoskeleton. Note=Upon oxidative stress, redistributes to protusions from the cell surface (By similarity). Peripherally associated with the inner face of the ER membrane, probably mediated by the interaction with TOR1AIP1. The association with nucleus membrane is mediated by the interaction with TOR1AIP2.

### Tissue Location

Widely expressed. Highest levels in kidney and liver. In the brain, high levels found in the dopaminergic neurons of the substantia nigra pars compacta, as well as in the neocortex, hippocampus and cerebellum. Also highly expressed in the spinal cord

## Images

---



Please note: All products are 'FOR RESEARCH USE ONLY. NOT FOR USE IN DIAGNOSTIC OR THERAPEUTIC PROCEDURES'.