

# PTBP2 Rabbit mAb

Catalog # AP77407

## Product Information

<b>Application</b>	WB, IHC-P, IF, ICC
<b>Primary Accession</b>	<a href="#">Q9UKA9</a>
<b>Reactivity</b>	Rat, Human, Mouse
<b>Host</b>	Rabbit
<b>Clonality</b>	Monoclonal Antibody
<b>Isotype</b>	IgG
<b>Conjugate</b>	Unconjugated
<b>Immunogen</b>	A synthesized peptide derived from human PTBP2
<b>Purification</b>	Affinity Chromatography
<b>Calculated MW</b>	57491

## Additional Information

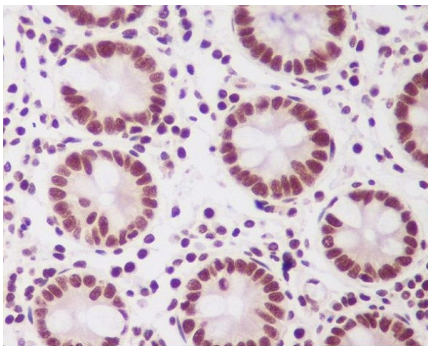
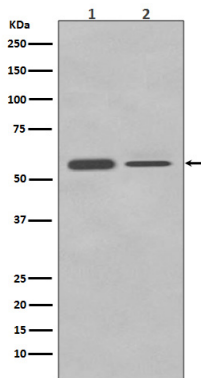
<b>Gene ID</b>	58155
<b>Other Names</b>	PTBP2
<b>Dilution</b>	WB~~1/500-1/1000 IHC-P~~N/A IF~~1:50~200 ICC~~N/A
<b>Format</b>	Liquid in 10mM PBS, pH 7.4, 150mM sodium chloride, 0.05% BSA, 0.02% sodium azide and 50% glycerol.
<b>Storage</b>	Store at 4°C short term. Aliquot and store at -20°C long term. Avoid freeze/thaw cycles.

## Protein Information

<b>Name</b>	PTBP2 ( <a href="#">HGNC:17662</a> )
<b>Synonyms</b>	NPTB, PTB, PTBLP
<b>Function</b>	RNA-binding protein which binds to intronic polypyrimidine tracts and mediates negative regulation of exons splicing. May antagonize in a tissue-specific manner the ability of NOVA1 to activate exon selection. In addition to its function in pre-mRNA splicing, plays also a role in the regulation of translation.
<b>Cellular Location</b>	Nucleus {ECO:0000250 UniProtKB:Q91Z31}.
<b>Tissue Location</b>	Mainly expressed in brain although also detected in other tissues like heart and skeletal muscle. Isoform 1 and isoform 2 are specifically expressed in neuronal tissues. Isoform 3 and isoform 4 are expressed in non-neuronal tissues. Isoform 5 and isoform 6 are truncated forms expressed in

## Images

---



Please note: All products are 'FOR RESEARCH USE ONLY. NOT FOR USE IN DIAGNOSTIC OR THERAPEUTIC PROCEDURES'.