

Sonic Hedgehog Rabbit mAb

Catalog # AP77406

Product Information

Application	WB, IHC-P, IF, FC, ICC
Primary Accession	Q15465
Reactivity	Human
Host	Rabbit
Clonality	Monoclonal Antibody
Isotype	IgG
Conjugate	Unconjugated
Immunogen	A synthesized peptide derived from human Sonic Hedgehog
Purification	Affinity Chromatography
Calculated MW	49607

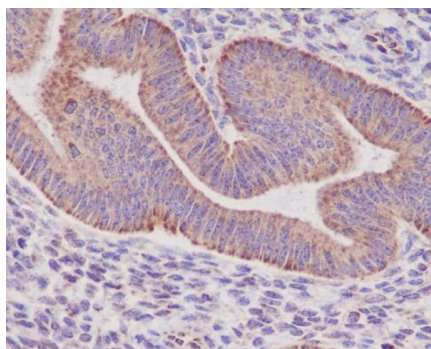
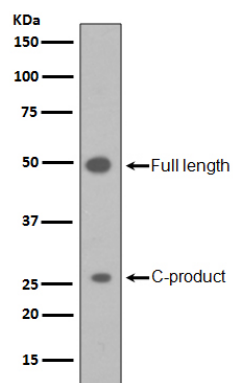
Additional Information

Gene ID	6469
Other Names	SHH
Dilution	WB~~1/500-1/1000 IHC-P~~N/A IF~~1:50~200 FC~~1:10~50 ICC~~N/A
Format	Liquid in 10mM PBS, pH 7.4, 150mM sodium chloride, 0.05% BSA, 0.02% sodium azide and 50% glycerol.
Storage	Store at 4°C short term. Aliquot and store at -20°C long term. Avoid freeze/thaw cycles.

Protein Information

Name	SHH (HGNC:10848)
Function	[Sonic hedgehog protein]: The C-terminal part of the sonic hedgehog protein precursor displays an autoproteolysis and a cholesterol transferase activity (By similarity). Both activities result in the cleavage of the full-length protein into two parts (ShhN and ShhC) followed by the covalent attachment of a cholesterol moiety to the C-terminal of the newly generated ShhN (By similarity). Both activities occur in the endoplasmic reticulum (By similarity). Once cleaved, ShhC is degraded in the endoplasmic reticulum (By similarity).
Cellular Location	[Sonic hedgehog protein]: Endoplasmic reticulum membrane. Golgi apparatus membrane. Secreted Note=Co-localizes with HHAT in the ER and Golgi membrane

Images



Please note: All products are 'FOR RESEARCH USE ONLY. NOT FOR USE IN DIAGNOSTIC OR THERAPEUTIC PROCEDURES'.