

# RNF20 Rabbit mAb

Catalog # AP77405

## Product Information

---

<b>Application</b>	WB, IF, FC, ICC, IP
<b>Primary Accession</b>	<a href="#">Q5VTR2</a>
<b>Reactivity</b>	Human, Mouse
<b>Host</b>	Rabbit
<b>Clonality</b>	Monoclonal Antibody
<b>Isotype</b>	IgG
<b>Conjugate</b>	Unconjugated
<b>Immunogen</b>	A synthesized peptide derived from human RNF20
<b>Purification</b>	Affinity Chromatography
<b>Calculated MW</b>	113662

## Additional Information

---

<b>Gene ID</b>	56254
<b>Other Names</b>	RNF20
<b>Dilution</b>	WB~~1/500-1/1000 IF~~1:50~200 FC~~1:10~50 ICC~~N/A IP~~N/A
<b>Format</b>	Liquid in 10mM PBS, pH 7.4, 150mM sodium chloride, 0.05% BSA, 0.02% sodium azide and 50% glycerol.
<b>Storage</b>	Store at 4°C short term. Aliquot and store at -20°C long term. Avoid freeze/thaw cycles.

## Protein Information

---

<b>Name</b>	RNF20
<b>Synonyms</b>	BRE1A
<b>Function</b>	Component of the RNF20/40 E3 ubiquitin-protein ligase complex that mediates monoubiquitination of 'Lys-120' of histone H2B (H2BK120ub1). H2BK120ub1 gives a specific tag for epigenetic transcriptional activation and is also prerequisite for histone H3 'Lys-4' and 'Lys-79' methylation (H3K4me and H3K79me, respectively). It thereby plays a central role in histone code and gene regulation. The RNF20/40 complex forms a H2B ubiquitin ligase complex in cooperation with the E2 enzyme UBE2A or UBE2B; reports about the cooperation with UBE2E1/UBCH are contradictory. Required for transcriptional activation of Hox genes. Recruited to the MDM2 promoter, probably by being recruited by p53/TP53, and thereby acts as a transcriptional coactivator. Mediates the polyubiquitination of isoform 2 of PA2G4 in cancer cells leading to its proteasome-mediated degradation.

**Cellular Location**

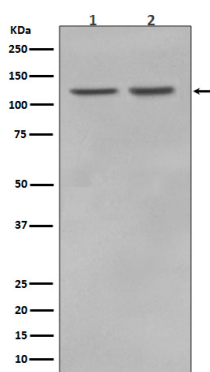
Nucleus

**Tissue Location**

Expressed in the normal brain and also in malignant gliomas (at protein level).

**Images**

---



Please note: All products are 'FOR RESEARCH USE ONLY. NOT FOR USE IN DIAGNOSTIC OR THERAPEUTIC PROCEDURES'.