

# Desmoglein 1 Rabbit mAb

Catalog # AP77391

## Product Information

---

<b>Application</b>	WB, IHC-P, IF, ICC
<b>Primary Accession</b>	<a href="#">Q02413</a>
<b>Reactivity</b>	Rat, Human, Mouse
<b>Host</b>	Rabbit
<b>Clonality</b>	Monoclonal Antibody
<b>Isotype</b>	IgG
<b>Conjugate</b>	Unconjugated
<b>Immunogen</b>	A synthesized peptide derived from human DSG1
<b>Purification</b>	Affinity Chromatography
<b>Calculated MW</b>	113748

## Additional Information

---

<b>Gene ID</b>	1828
<b>Other Names</b>	DSG1
<b>Dilution</b>	WB~~1/500-1/1000 IHC-P~~N/A IF~~1:50~200 ICC~~N/A
<b>Format</b>	Liquid in 10mM PBS, pH 7.4, 150mM sodium chloride, 0.05% BSA, 0.02% sodium azide and 50% glycerol.
<b>Storage</b>	Store at 4°C short term. Aliquot and store at -20°C long term. Avoid freeze/thaw cycles.

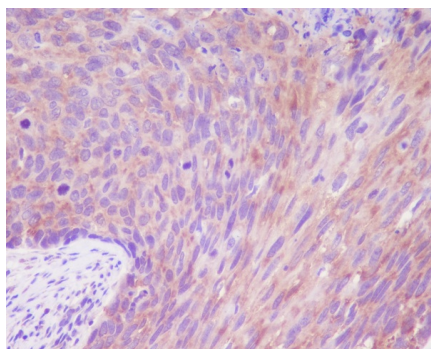
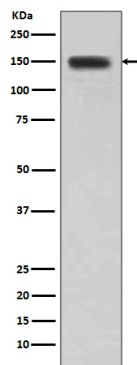
## Protein Information

---

<b>Name</b>	DSG1
<b>Synonyms</b>	CDHF4
<b>Function</b>	Component of intercellular desmosome junctions (PubMed: <a href="#">34368962</a> ). Involved in the interaction of plaque proteins and intermediate filaments mediating cell-cell adhesion (PubMed: <a href="#">19717567</a> ).
<b>Cellular Location</b>	Cell membrane; Single-pass type I membrane protein {ECO:0000250 UniProtKB:Q7TSF1} Cell junction, desmosome. Cytoplasm. Nucleus
<b>Tissue Location</b>	Expressed in all suprabasal layers of the epidermis, with the highest expression seen in the granular layer (at protein level).

## Images

---



Please note: All products are 'FOR RESEARCH USE ONLY. NOT FOR USE IN DIAGNOSTIC OR THERAPEUTIC PROCEDURES'.