

Caveolin 3 Rabbit mAb

Catalog # AP77389

Product Information

Application	WB, IP
Primary Accession	P56539
Reactivity	Rat, Human, Mouse
Host	Rabbit
Clonality	Monoclonal Antibody
Isotype	IgG
Conjugate	Unconjugated
Immunogen	A synthesized peptide derived from human Caveolin-3
Purification	Affinity Chromatography
Calculated MW	17259

Additional Information

Gene ID	859
Other Names	CAV3
Dilution	WB~~1/500-1/1000 IP~~N/A
Format	Liquid in 10mM PBS, pH 7.4, 150mM sodium chloride, 0.05% BSA, 0.02% sodium azide and 50% glycerol.
Storage	Store at 4°C short term. Aliquot and store at -20°C long term. Avoid freeze/thaw cycles.

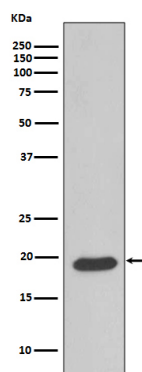
Protein Information

Name	CAV3
Function	May act as a scaffolding protein within caveolar membranes. Interacts directly with G-protein alpha subunits and can functionally regulate their activity. May also regulate voltage-gated potassium channels. Plays a role in the sarcolemma repair mechanism of both skeletal muscle and cardiomyocytes that permits rapid resealing of membranes disrupted by mechanical stress (By similarity). Mediates the recruitment of CAVIN2 and CAVIN3 proteins to the caveolae (PubMed: 19262564).
Cellular Location	Golgi apparatus membrane; Peripheral membrane protein. Cell membrane {ECO:0000250 UniProtKB:P51638}; Peripheral membrane protein. Membrane, caveola {ECO:0000250 UniProtKB:P51637}; Peripheral membrane protein. Cell membrane, sarcolemma {ECO:0000250 UniProtKB:P51637}. Note=Potential hairpin-like structure in the membrane. Membrane protein of caveolae (By similarity)

Tissue Location

Expressed predominantly in muscle.

Images



Please note: All products are 'FOR RESEARCH USE ONLY. NOT FOR USE IN DIAGNOSTIC OR THERAPEUTIC PROCEDURES'.