

TRAF4 Rabbit mAb

Catalog # AP77361

Product Information

Application	WB, IF, FC, ICC
Primary Accession	Q9BUZ4
Reactivity	Human, Mouse
Host	Rabbit
Clonality	Monoclonal Antibody
Isotype	IgG
Conjugate	Unconjugated
Immunogen	A synthesized peptide derived from human TRAF4
Purification	Affinity Chromatography
Calculated MW	53543

Additional Information

Gene ID	9618
Other Names	TRAF4
Dilution	WB~~1/500-1/1000 IF~~1:50~200 FC~~1:10~50 ICC~~N/A
Format	Liquid in 10mM PBS, pH 7.4, 150mM sodium chloride, 0.05% BSA, 0.02% sodium azide and 50% glycerol.
Storage	Store at 4°C short term. Aliquot and store at -20°C long term. Avoid freeze/thaw cycles.

Protein Information

Name	TRAF4
Synonyms	CART1, MLN62, RNF83
Function	Adapter protein with E3 ligase activity that is involved in many diverse biological processes including cell proliferation, migration, differentiation, DNA repair, platelet activation or apoptosis (PubMed: 30352854 , PubMed: 31076633 , PubMed: 32268273 , PubMed: 33991522). Promotes EGFR-mediated signaling by facilitating the dimerization of EGFR and downstream AKT activation thereby promoting cell proliferation (PubMed: 30352854). Ubiquitinates SMURF2 through 'Lys-48'-linked ubiquitin chain leading to SMURF2 degradation through the proteasome and subsequently osteogenic differentiation (PubMed: 31076633). Promotes 'Lys-63'-mediated ubiquitination of CHK1 which in turn activates cell cycle arrest and activation of DNA repair (PubMed: 32357935). In addition, promotes an atypical 'Lys-29'-linked ubiquitination at the C-terminal end of

IRS1 which is crucial for insulin-like growth factor (IGF) signal transduction (PubMed:[33991522](#)). Regulates activation of NF-kappa-B in response to signaling through Toll-like receptors. Required for normal skeleton development, and for normal development of the respiratory tract (By similarity). Required for activation of RPS6KB1 in response to TNF signaling. Modulates TRAF6 functions. Inhibits adipogenic differentiation by activating pyruvate kinase PKM activity and subsequently the beta-catenin signaling pathway (PubMed:[32268273](#)).

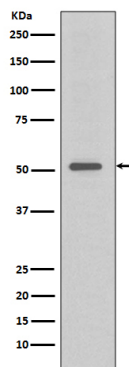
Cellular Location

Cytoplasm. Nucleus. Cytoplasm, perinuclear region. Cell junction, tight junction. Cell membrane; Peripheral membrane protein; Cytoplasmic side. Cytoplasm, cytoskeleton

Tissue Location

Expressed in epithelial cells of thymus, dendritic cells of lymph node, and in the basal cell layer of epithelia such as epidermis, nasopharynx, respiratory tract, salivary gland, and esophagus.

Images



Please note: All products are 'FOR RESEARCH USE ONLY. NOT FOR USE IN DIAGNOSTIC OR THERAPEUTIC PROCEDURES'.