

# ErbB 3 Rabbit mAb

Catalog # AP77359

## Product Information

---

<b>Application</b>	WB, IP
<b>Primary Accession</b>	<a href="#">P21860</a>
<b>Reactivity</b>	Rat, Human
<b>Host</b>	Rabbit
<b>Clonality</b>	Monoclonal Antibody
<b>Isotype</b>	IgG
<b>Conjugate</b>	Unconjugated
<b>Immunogen</b>	A synthesized peptide derived from human ErbB (HER3)
<b>Purification</b>	Affinity Chromatography
<b>Calculated MW</b>	148098

## Additional Information

---

<b>Gene ID</b>	2065
<b>Other Names</b>	ERBB3
<b>Dilution</b>	WB~~1/500-1/1000 IP~~N/A
<b>Format</b>	Liquid in 10mM PBS, pH 7.4, 150mM sodium chloride, 0.05% BSA, 0.02% sodium azide and 50% glycerol.
<b>Storage</b>	Store at 4°C short term. Aliquot and store at -20°C long term. Avoid freeze/thaw cycles.

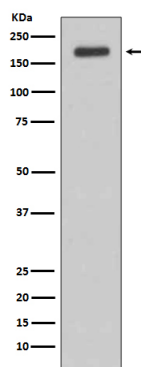
## Protein Information

---

<b>Name</b>	ERBB3
<b>Synonyms</b>	HER3
<b>Function</b>	Tyrosine-protein kinase that plays an essential role as cell surface receptor for neuregulins. Binds to neuregulin-1 (NRG1) and is activated by it; ligand-binding increases phosphorylation on tyrosine residues and promotes its association with the p85 subunit of phosphatidylinositol 3-kinase (PubMed: <a href="#">20682778</a> ). May also be activated by CSPG5 (PubMed: <a href="#">15358134</a> ). Involved in the regulation of myeloid cell differentiation (PubMed: <a href="#">27416908</a> ).
<b>Cellular Location</b>	[Isoform 1]: Cell membrane; Single-pass type I membrane protein
<b>Tissue Location</b>	Epithelial tissues and brain.

## Images

---



Please note: All products are 'FOR RESEARCH USE ONLY. NOT FOR USE IN DIAGNOSTIC OR THERAPEUTIC PROCEDURES'.