

CCR7 Rabbit mAb

Catalog # AP77348

Product Information

Application	WB, IHC-P, IF, ICC, IP
Primary Accession	P32248
Reactivity	Rat, Human, Mouse
Host	Rabbit
Clonality	Monoclonal Antibody
Isotype	IgG
Conjugate	Unconjugated
Immunogen	A synthesized peptide derived from human CCR7
Purification	Affinity Chromatography
Calculated MW	42874

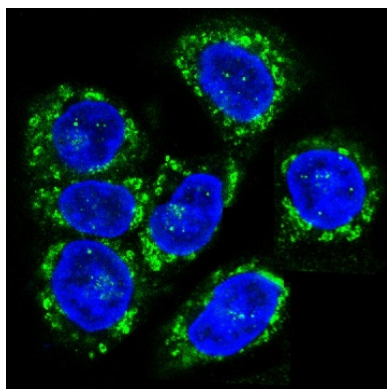
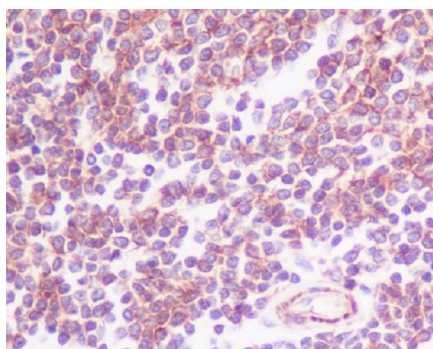
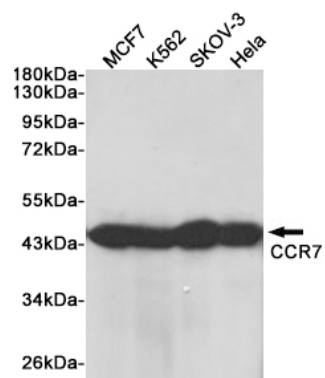
Additional Information

Gene ID	1236
Other Names	CCR7
Dilution	WB~~1/500-1/1000 IHC-P~~N/A IF~~1/50-1/200 ICC~~N/A IP~~N/A
Format	Liquid in 10mM PBS, pH 7.4, 150mM sodium chloride, 0.05% BSA, 0.02% sodium azide and 50% glycerol.
Storage	Store at 4°C short term. Aliquot and store at -20°C long term. Avoid freeze/thaw cycles.

Protein Information

Name	CCR7
Synonyms	CMKBR7, EBI1, EVI1
Function	Receptor for the MIP-3-beta chemokine. Probable mediator of EBV effects on B-lymphocytes or of normal lymphocyte functions.
Cellular Location	Cell membrane; Multi-pass membrane protein.
Tissue Location	Expressed in various lymphoid tissues and activated B- and T-lymphocytes, strongly up-regulated in B-cells infected with Epstein-Barr virus and T-cells infected with herpesvirus 6 or 7

Images



Please note: All products are 'FOR RESEARCH USE ONLY. NOT FOR USE IN DIAGNOSTIC OR THERAPEUTIC PROCEDURES'.