

Caspase 1 Rabbit mAb

Catalog # AP77342

Product Information

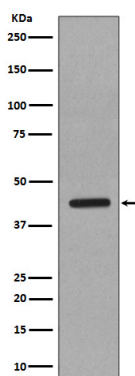
| | |
|--------------------------|--|
| Application | WB, IHC-P |
| Primary Accession | P29466 |
| Reactivity | Rat, Human |
| Host | Rabbit |
| Clonality | Monoclonal Antibody |
| Isotype | IgG |
| Conjugate | Unconjugated |
| Immunogen | A synthesized peptide derived from human Caspase-1 |
| Purification | Affinity Chromatography |
| Calculated MW | 45 KDa |

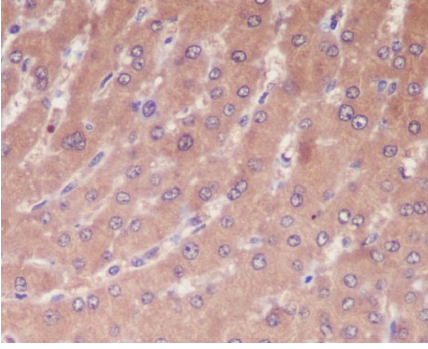
Additional Information

| | |
|--------------------|--|
| Other Names | CASP1 |
| Dilution | WB~~1/500-1/1000 IHC-P~~N/A |
| Format | Liquid in 10mM PBS, pH 7.4, 150mM sodium chloride, 0.05% BSA, 0.02% sodium azide and 50% glycerol. |
| Storage | Store at 4°C short term. Aliquot and store at -20°C long term. Avoid freeze/thaw cycles. |

Protein Information

Images





Please note: All products are 'FOR RESEARCH USE ONLY. NOT FOR USE IN DIAGNOSTIC OR THERAPEUTIC PROCEDURES'.