

# Cleaved-Caspase 2 Rabbit mAb

Catalog # AP77340

## Product Information

---

<b>Application</b>	WB, IHC-P, IF, FC, ICC
<b>Primary Accession</b>	<a href="#">P42575</a>
<b>Reactivity</b>	Rat, Human, Mouse
<b>Host</b>	Rabbit
<b>Clonality</b>	Monoclonal Antibody
<b>Isotype</b>	IgG
<b>Conjugate</b>	Unconjugated
<b>Immunogen</b>	A synthesized peptide derived from human Caspase-2
<b>Purification</b>	Affinity Chromatography
<b>Calculated MW</b>	50685

## Additional Information

---

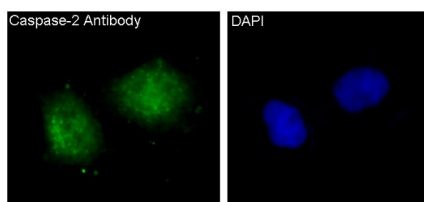
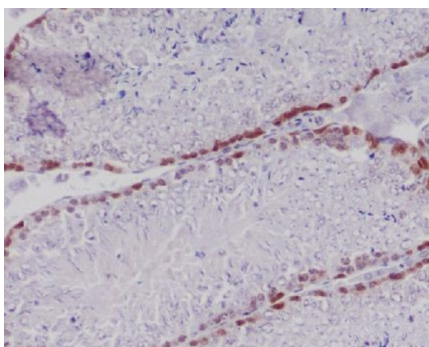
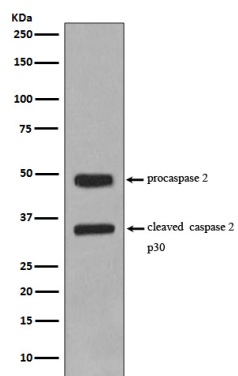
<b>Gene ID</b>	835
<b>Other Names</b>	CASP2
<b>Dilution</b>	WB~~1/500-1/1000 IHC-P~~N/A IF~~1/50-1/200 FC~~1:10~50 ICC~~N/A
<b>Format</b>	Liquid in 10mM PBS, pH 7.4, 150mM sodium chloride, 0.05% BSA, 0.02% sodium azide and 50% glycerol.
<b>Storage</b>	Store at 4°C short term. Aliquot and store at -20°C long term. Avoid freeze/thaw cycles.

## Protein Information

---

<b>Name</b>	CASP2
<b>Synonyms</b>	ICH1, NEDD2
<b>Function</b>	Is a regulator of the cascade of caspases responsible for apoptosis execution (PubMed: <a href="#">11156409</a> , PubMed: <a href="#">15073321</a> , PubMed: <a href="#">8087842</a> ). Might function by either activating some proteins required for cell death or inactivating proteins necessary for cell survival (PubMed: <a href="#">15073321</a> ). Associates with PIDD1 and CRADD to form the PIDDosome, a complex that activates CASP2 and triggers apoptosis in response to genotoxic stress (PubMed: <a href="#">15073321</a> ).
<b>Tissue Location</b>	Expressed at higher levels in the embryonic lung, liver and kidney than in the heart and brain. In adults, higher level expression is seen in the placenta, lung, kidney, and pancreas than in the heart, brain, liver and skeletal muscle

## Images



Please note: All products are 'FOR RESEARCH USE ONLY. NOT FOR USE IN DIAGNOSTIC OR THERAPEUTIC PROCEDURES'.