

# Bcl2 A1 Rabbit mAb

Catalog # AP77325

## Product Information

---

<b>Application</b>	WB, IHC-P, FC
<b>Primary Accession</b>	<a href="#">Q16548</a>
<b>Reactivity</b>	Rat, Human, Mouse
<b>Host</b>	Rabbit
<b>Clonality</b>	Monoclonal Antibody
<b>Isotype</b>	IgG
<b>Conjugate</b>	Unconjugated
<b>Immunogen</b>	A synthesized peptide derived from human BCL2A1
<b>Purification</b>	Affinity Chromatography
<b>Calculated MW</b>	20132

## Additional Information

---

<b>Gene ID</b>	597
<b>Other Names</b>	BCL2A1
<b>Dilution</b>	WB~~1/500-1/1000 IHC-P~~N/A FC~~1:10~50
<b>Format</b>	Liquid in 10mM PBS, pH 7.4, 150mM sodium chloride, 0.05% BSA, 0.02% sodium azide and 50% glycerol.
<b>Storage</b>	Store at 4°C short term. Aliquot and store at -20°C long term. Avoid freeze/thaw cycles.

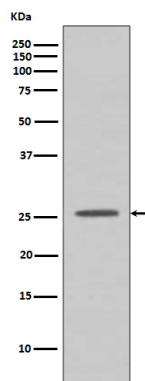
## Protein Information

---

<b>Name</b>	BCL2A1
<b>Synonyms</b>	BCL2L5, BFL1, GRS, HBPA1
<b>Function</b>	Retards apoptosis induced by IL-3 deprivation. May function in the response of hemopoietic cells to external signals and in maintaining endothelial survival during infection (By similarity). Can inhibit apoptosis induced by serum starvation in the mammary epithelial cell line HC11 (By similarity).
<b>Cellular Location</b>	Cytoplasm.
<b>Tissue Location</b>	Seems to be restricted to the hematopoietic compartment. Expressed in peripheral blood, spleen, and bone marrow, at moderate levels in lung, small intestine and testis, at a minimal levels in other tissues. Also found in vascular smooth muscle cells and hematopoietic malignancies

## Images

---



Please note: All products are 'FOR RESEARCH USE ONLY. NOT FOR USE IN DIAGNOSTIC OR THERAPEUTIC PROCEDURES'.