

Phospho-SHP2 (Tyr542) Rabbit mAb

Catalog # AP77317

Product Information

Application	WB, IF, ICC, IP
Primary Accession	Q06124
Reactivity	Human, Mouse
Host	Rabbit
Clonality	Monoclonal Antibody
Isotype	IgG
Conjugate	Unconjugated
Immunogen	A synthesized peptide derived from human Phospho-SHP2 (Y542)
Purification	Affinity Chromatography
Calculated MW	68011

Additional Information

Gene ID	5781
Other Names	PTPN11
Dilution	WB~~1/500-1/1000 IF~~1:50~200 ICC~~N/A IP~~N/A
Format	Liquid in 10mM PBS, pH 7.4, 150mM sodium chloride, 0.05% BSA, 0.02% sodium azide and 50% glycerol.
Storage	Store at 4°C short term. Aliquot and store at -20°C long term. Avoid freeze/thaw cycles.

Protein Information

Name	PTPN11
Synonyms	PTP2C, SHPTP2
Function	Acts downstream of various receptor and cytoplasmic protein tyrosine kinases to participate in the signal transduction from the cell surface to the nucleus (PubMed: 10655584 , PubMed: 14739280 , PubMed: 18559669 , PubMed: 18829466 , PubMed: 26742426 , PubMed: 28074573). Positively regulates MAPK signal transduction pathway (PubMed: 28074573). Dephosphorylates GAB1, ARHGAP35 and EGFR (PubMed: 28074573). Dephosphorylates ROCK2 at 'Tyr-722' resulting in stimulation of its RhoA binding activity (PubMed: 18559669). Dephosphorylates CDC73 (PubMed: 26742426). Dephosphorylates SOX9 on tyrosine residues, leading to inactivate SOX9 and promote ossification (By similarity). Dephosphorylates tyrosine-phosphorylated NEDD9/CAS-L (PubMed: 19275884).

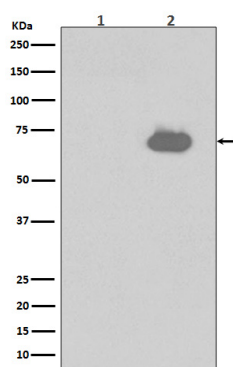
Cellular Location

Cytoplasm. Nucleus

Tissue Location

Widely expressed, with highest levels in heart, brain, and skeletal muscle.

Images



Please note: All products are 'FOR RESEARCH USE ONLY. NOT FOR USE IN DIAGNOSTIC OR THERAPEUTIC PROCEDURES'.