

CPT2 Rabbit mAb

Catalog # AP77311

Product Information

Application	WB, IHC-P, ICC
Primary Accession	P23786
Reactivity	Human, Mouse, Rat
Host	Rabbit
Clonality	Monoclonal Antibody
Calculated MW	73777

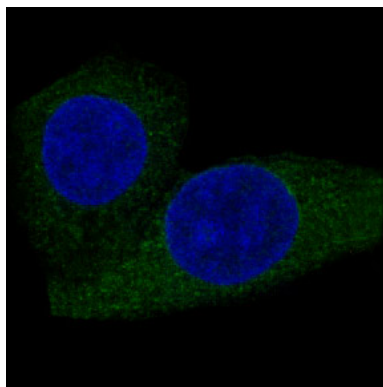
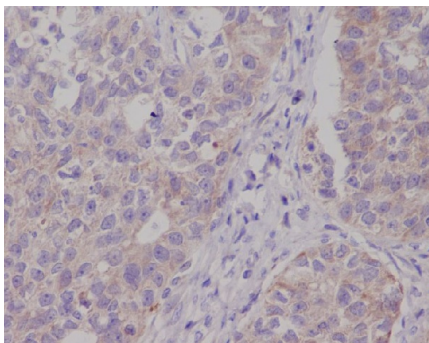
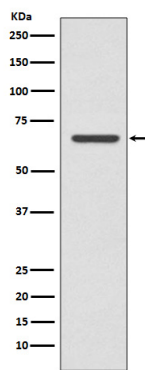
Additional Information

Gene ID	1376
Other Names	CPT2
Dilution	WB~~1/500-1/1000 IHC-P~~N/A ICC~~N/A
Format	10mM PBS, pH 7.4, 150mM sodium chloride, 0.05% BSA, 0.02% sodium azide and 50% glycerol.
Storage	Store at 4°C short term. Aliquot and store at -20°C long term. Avoid freeze/thaw cycles.

Protein Information

Name	CPT2 (HGNC:2330)
Synonyms	CPT1
Function	Involved in the intramitochondrial synthesis of acylcarnitines from accumulated acyl-CoA metabolites (PubMed: 20538056 , PubMed: 24780397). Reconverts acylcarnitines back into the respective acyl-CoA esters that can then undergo beta-oxidation, an essential step for the mitochondrial uptake of long-chain fatty acids and their subsequent beta-oxidation in the mitochondrion. Active with medium (C8- C12) and long-chain (C14-C18) acyl-CoA esters (PubMed: 20538056).
Cellular Location	Mitochondrion inner membrane; Peripheral membrane protein; Matrix side

Images



Please note: All products are 'FOR RESEARCH USE ONLY. NOT FOR USE IN DIAGNOSTIC OR THERAPEUTIC PROCEDURES'.