

MYL2 Rabbit mAb

Catalog # AP77309

Product Information

Application	WB, IHC-P, IP
Primary Accession	P10916
Reactivity	Rat, Human, Mouse
Host	Rabbit
Clonality	Monoclonal Antibody
Isotype	IgG
Conjugate	Unconjugated
Immunogen	A synthesized peptide derived from human Myosin Light Chain 2
Purification	Affinity Chromatography
Calculated MW	18789

Additional Information

Gene ID	4633
Other Names	MYL2
Dilution	WB~~1/500-1/1000 IHC-P~~N/A IP~~N/A
Format	Liquid in 10mM PBS, pH 7.4, 150mM sodium chloride, 0.05% BSA, 0.02% sodium azide and 50% glycerol.
Storage	Store at 4°C short term. Aliquot and store at -20°C long term. Avoid freeze/thaw cycles.

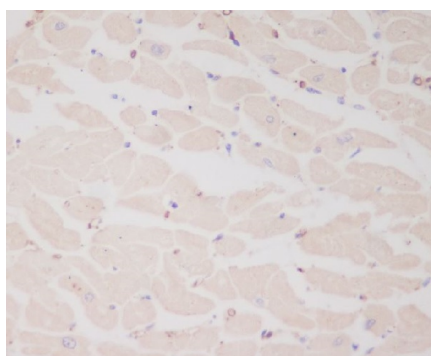
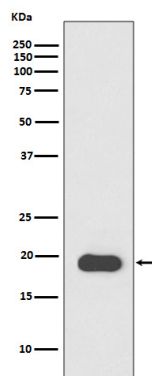
Protein Information

Name	MYL2 (HGNC:7583)
Function	Contractile protein that plays a role in heart development and function (PubMed: 23365102 , PubMed: 32453731). Following phosphorylation, plays a role in cross-bridge cycling kinetics and cardiac muscle contraction by increasing myosin lever arm stiffness and promoting myosin head diffusion; as a consequence of the increase in maximum contraction force and calcium sensitivity of contraction force. These events altogether slow down myosin kinetics and prolong duty cycle resulting in accumulated myosins being cooperatively recruited to actin binding sites to sustain thin filament activation as a means to fine-tune myofilament calcium sensitivity to force (By similarity). During cardiogenesis plays an early role in cardiac contractility by promoting cardiac myofibril assembly (By similarity).
Cellular Location	Cytoplasm, myofibril, sarcomere, A band {ECO:0000250 UniProtKB:P08733}

Tissue Location

Highly expressed in type I muscle fibers.

Images



Please note: All products are 'FOR RESEARCH USE ONLY. NOT FOR USE IN DIAGNOSTIC OR THERAPEUTIC PROCEDURES'.