

Cytokeratin 1 Rabbit mAb

Catalog # AP77300

Product Information

Application	WB, IHC-P
Primary Accession	P04264
Reactivity	Rat, Human, Mouse
Host	Rabbit
Clonality	Monoclonal Antibody
Isotype	IgG
Conjugate	Unconjugated
Immunogen	A synthesized peptide derived from human Cytokeratin 1
Purification	Affinity Chromatography
Calculated MW	66039

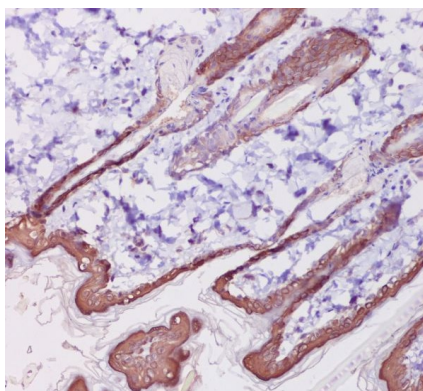
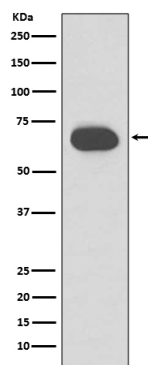
Additional Information

Gene ID	3848
Other Names	KRT1
Dilution	WB~~1/500-1/1000 IHC-P~~N/A
Format	Liquid in 10mM PBS, pH 7.4, 150mM sodium chloride, 0.05% BSA, 0.02% sodium azide and 50% glycerol.
Storage	Store at 4°C short term. Aliquot and store at -20°C long term. Avoid freeze/thaw cycles.

Protein Information

Name	KRT1
Synonyms	KRTA
Function	May regulate the activity of kinases such as PKC and SRC via binding to integrin beta-1 (ITB1) and the receptor of activated protein C kinase 1 (RACK1). In complex with C1QBP is a high affinity receptor for kininogen-1/HMWK.
Cellular Location	Cell membrane. Cytoplasm
Tissue Location	The source of this protein is neonatal foreskin. The 67-kDa type II keratins are expressed in terminally differentiating epidermis

Images



Please note: All products are 'FOR RESEARCH USE ONLY. NOT FOR USE IN DIAGNOSTIC OR THERAPEUTIC PROCEDURES'.