

Tissue Factor Rabbit mAb

Catalog # AP77294

Product Information

| | |
|--------------------------|--|
| Application | WB, IHC-P, IF, ICC |
| Primary Accession | P13726 |
| Reactivity | Rat, Human, Mouse |
| Host | Rabbit |
| Clonality | Monoclonal Antibody |
| Isotype | IgG |
| Conjugate | Unconjugated |
| Immunogen | A synthesized peptide derived from human Tissue Factor |
| Purification | Affinity Chromatography |
| Calculated MW | 33068 |

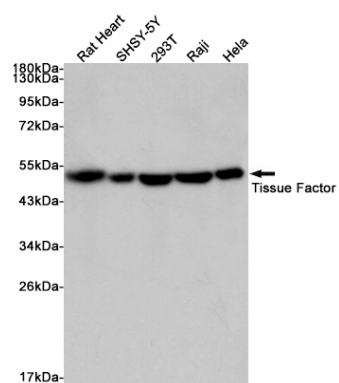
Additional Information

| | |
|--------------------|--|
| Gene ID | 2152 |
| Other Names | F3 |
| Dilution | WB~~1/500-1/1000 IHC-P~~N/A IF~~1:50~200 ICC~~N/A |
| Format | Liquid in 10mM PBS, pH 7.4, 150mM sodium chloride, 0.05% BSA, 0.02% sodium azide and 50% glycerol. |
| Storage | Store at 4°C short term. Aliquot and store at -20°C long term. Avoid freeze/thaw cycles. |

Protein Information

| | |
|--------------------------|--|
| Name | F3 |
| Function | Initiates blood coagulation by forming a complex with circulating factor VII or VIIa. The [TF:VIIa] complex activates factors IX or X by specific limited proteolysis. TF plays a role in normal hemostasis by initiating the cell-surface assembly and propagation of the coagulation protease cascade. |
| Cellular Location | [Isoform 1]: Membrane; Single-pass type I membrane protein |
| Tissue Location | Lung, placenta and pancreas. |

Images



Please note: All products are 'FOR RESEARCH USE ONLY. NOT FOR USE IN DIAGNOSTIC OR THERAPEUTIC PROCEDURES'.