

Cytokeratin 2e Rabbit mAb

Catalog # AP77293

Product Information

Application	WB, IHC-P
Primary Accession	P35908
Reactivity	Human
Host	Rabbit
Clonality	Monoclonal Antibody
Isotype	IgG
Conjugate	Unconjugated
Immunogen	A synthesized peptide derived from human Cytokeratin 2e
Purification	Affinity Chromatography
Calculated MW	65433

Additional Information

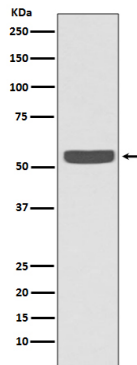
Gene ID	3849
Other Names	KRT2
Dilution	WB~~1/500-1/1000 IHC-P~~N/A
Format	Liquid in 10mM PBS, pH 7.4, 150mM sodium chloride, 0.05% BSA, 0.02% sodium azide and 50% glycerol.
Storage	Store at 4°C short term. Aliquot and store at -20°C long term. Avoid freeze/thaw cycles.

Protein Information

Name	KRT2
Synonyms	KRT2A, KRT2E
Function	Probably contributes to terminal cornification (PubMed: 1380918). Associated with keratinocyte activation, proliferation and keratinization (PubMed: 12598329). Required for maintenance of corneocytes and keratin filaments in suprabasal keratinocytes in the epidermis of the ear, potentially via moderation of expression and localization of keratins and their partner proteins (By similarity). Plays a role in the establishment of the epidermal barrier on plantar skin (By similarity).
Cellular Location	Cytoplasm.
Tissue Location	Expressed in the upper spinous and granular suprabasal layers of normal adult epidermal tissues from most body sites including thigh, breast nipple,

foot sole, penile shaft and axilla. Not present in foreskin, squamous metaplasias and carcinomas Expression in hypertrophic and keloid scars begins in the deepest suprabasal layer. Weakly expressed in normal gingiva and tongue, however expression is induced in benign keratoses of lingual mucosa and in mild-to-moderate oral dysplasia with orthokeratinization

Images



Please note: All products are 'FOR RESEARCH USE ONLY. NOT FOR USE IN DIAGNOSTIC OR THERAPEUTIC PROCEDURES'.