

Glucose Transporter GLUT2 Rabbit mAb

Catalog # AP77292

Product Information

Application	WB
Primary Accession	P11168
Reactivity	Human
Host	Rabbit
Clonality	Monoclonal Antibody
Isotype	IgG
Conjugate	Unconjugated
Immunogen	A synthesized peptide derived from human GLUT2
Purification	Affinity Chromatography
Calculated MW	57490

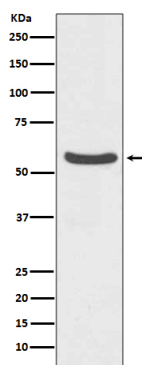
Additional Information

Gene ID	6514
Other Names	SLC2A2
Dilution	WB~~1/500-1/1000
Format	Liquid in 10mM PBS, pH 7.4, 150mM sodium chloride, 0.05% BSA, 0.02% sodium azide and 50% glycerol.
Storage	Store at 4°C short term. Aliquot and store at -20°C long term. Avoid freeze/thaw cycles.

Protein Information

Name	SLC2A2 (HGNC:11006)
Function	Facilitative hexose transporter that mediates the transport of glucose, fructose and galactose (PubMed: 16186102 , PubMed: 23396969 , PubMed: 28083649 , PubMed: 8027028 , PubMed: 8457197). Likely mediates the bidirectional transfer of glucose across the plasma membrane of hepatocytes and is responsible for uptake of glucose by the beta cells; may comprise part of the glucose-sensing mechanism of beta cells (PubMed: 8027028). May also participate with the Na(+)/glucose cotransporter in the transcellular transport of glucose in the small intestine and kidney (PubMed: 3399500). Also able to mediate the transport of dehydroascorbate and urate (PubMed: 23396969 , PubMed: 40209957).
Cellular Location	Cell membrane; Multi-pass membrane protein
Tissue Location	Liver, insulin-producing beta cell, small intestine and kidney.

Images



Please note: All products are 'FOR RESEARCH USE ONLY. NOT FOR USE IN DIAGNOSTIC OR THERAPEUTIC PROCEDURES'.