

# 14-3-3 sigma Rabbit mAb

Catalog # AP77287

## Product Information

---

<b>Application</b>	WB, IHC-P
<b>Primary Accession</b>	<a href="#">P31947</a>
<b>Reactivity</b>	Rat, Human
<b>Host</b>	Rabbit
<b>Clonality</b>	Monoclonal Antibody
<b>Isotype</b>	IgG
<b>Conjugate</b>	Unconjugated
<b>Immunogen</b>	A synthesized peptide derived from human 14-3-3 sigma
<b>Purification</b>	Affinity Chromatography
<b>Calculated MW</b>	27774

## Additional Information

---

<b>Gene ID</b>	2810
<b>Other Names</b>	SFN
<b>Dilution</b>	WB~~1/500-1/1000 IHC-P~~N/A
<b>Format</b>	Liquid in 10mM PBS, pH 7.4, 150mM sodium chloride, 0.05% BSA, 0.02% sodium azide and 50% glycerol.
<b>Storage</b>	Store at 4°C short term. Aliquot and store at -20°C long term. Avoid freeze/thaw cycles.

## Protein Information

---

<b>Name</b>	SFN
<b>Synonyms</b>	HME1 {ECO:0000303   PubMed:1390337}
<b>Function</b>	Adapter protein implicated in the regulation of a large spectrum of both general and specialized signaling pathways (PubMed: <a href="#">15731107</a> , PubMed: <a href="#">22634725</a> , PubMed: <a href="#">28202711</a> , PubMed: <a href="#">37797010</a> ). Binds to a large number of partners, usually by recognition of a phosphoserine or phosphothreonine motif (PubMed: <a href="#">15731107</a> , PubMed: <a href="#">22634725</a> , PubMed: <a href="#">28202711</a> , PubMed: <a href="#">37797010</a> ). Binding generally results in the modulation of the activity of the binding partner (PubMed: <a href="#">15731107</a> , PubMed: <a href="#">22634725</a> , PubMed: <a href="#">28202711</a> , PubMed: <a href="#">37797010</a> ). Promotes cytosolic retention of GBP1 GTPase by binding to phosphorylated GBP1, thereby inhibiting the innate immune response (PubMed: <a href="#">37797010</a> ). Also acts as a TP53/p53-regulated inhibitor of G2/M progression (PubMed: <a href="#">9659898</a> ). When bound to KRT17, regulates protein synthesis and epithelial cell growth

by stimulating Akt/mTOR pathway (By similarity). Acts to maintain desmosome cell junction adhesion in epithelial cells via interacting with and sequestering PKP3 to the cytoplasm, thereby restricting its translocation to existing desmosome structures and therefore maintaining desmosome protein homeostasis (PubMed:[24124604](#)). Also acts to facilitate PKP3 exchange at desmosome plaques, thereby maintaining keratinocyte intercellular adhesion (PubMed:[29678907](#)). May also regulate MDM2 autoubiquitination and degradation and thereby activate p53/TP53 (PubMed:[18382127](#)).

#### Cellular Location

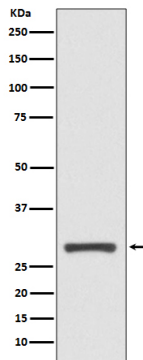
Cytoplasm. Nucleus {ECO:0000250|UniProtKB:O70456} Secreted. Note=May be secreted by a non- classical secretory pathway.

#### Tissue Location

Present mainly in tissues enriched in stratified squamous keratinizing epithelium.

## Images

---



Please note: All products are 'FOR RESEARCH USE ONLY. NOT FOR USE IN DIAGNOSTIC OR THERAPEUTIC PROCEDURES'.