

von Willebrand Factor Rabbit mAb

Catalog # AP77257

Product Information

| | |
|--------------------------|--|
| Application | WB, IHC-P |
| Primary Accession | P04275 |
| Reactivity | Human |
| Host | Rabbit |
| Clonality | Monoclonal Antibody |
| Isotype | IgG |
| Conjugate | Unconjugated |
| Immunogen | A synthesized peptide derived from human VWF |
| Purification | Affinity Chromatography |
| Calculated MW | 309265 |

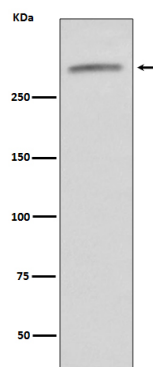
Additional Information

| | |
|--------------------|--|
| Gene ID | 7450 |
| Other Names | VWF |
| Dilution | WB~~1/500-1/1000 IHC-P~~N/A |
| Format | Liquid in 10mM PBS, pH 7.4, 150mM sodium chloride, 0.05% BSA, 0.02% sodium azide and 50% glycerol. |
| Storage | Store at 4°C short term. Aliquot and store at -20°C long term. Avoid freeze/thaw cycles. |

Protein Information

| | |
|--------------------------|--|
| Name | VWF |
| Synonyms | F8VWF |
| Function | Important in the maintenance of hemostasis, it promotes adhesion of platelets to the sites of vascular injury by forming a molecular bridge between sub-endothelial collagen matrix and platelet- surface receptor complex GPIb-IX-V. Also acts as a chaperone for coagulation factor VIII, delivering it to the site of injury, stabilizing its heterodimeric structure and protecting it from premature clearance from plasma. |
| Cellular Location | Secreted. Secreted, extracellular space, extracellular matrix. Note=Localized to storage granules |
| Tissue Location | Plasma. |

Images



Please note: All products are 'FOR RESEARCH USE ONLY. NOT FOR USE IN DIAGNOSTIC OR THERAPEUTIC PROCEDURES'.