

HE4 Rabbit mAb

Catalog # AP77253

Product Information

Application	WB, IF, FC, ICC, IP
Primary Accession	Q14508
Reactivity	Human, Mouse
Host	Rabbit
Clonality	Monoclonal Antibody
Isotype	IgG
Conjugate	Unconjugated
Immunogen	A synthesized peptide derived from human HE4
Purification	Affinity Chromatography
Calculated MW	12993

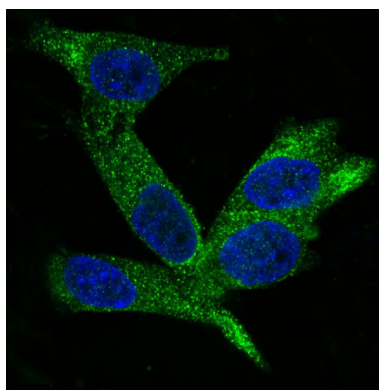
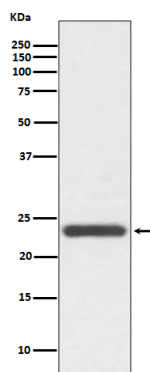
Additional Information

Gene ID	10406
Other Names	WFDC2
Dilution	WB~~1/500-1/1000 IF~~1/50-1/200 FC~~1:10~50 ICC~~N/A IP~~N/A
Format	Liquid in 10mM PBS, pH 7.4, 150mM sodium chloride, 0.05% BSA, 0.02% sodium azide and 50% glycerol.
Storage	Store at 4°C short term. Aliquot and store at -20°C long term. Avoid freeze/thaw cycles.

Protein Information

Name	WFDC2
Synonyms	HE4, WAP5
Function	Broad range protease inhibitor.
Cellular Location	Secreted
Tissue Location	Expressed in a number of normal tissues, including male reproductive system, regions of the respiratory tract and nasopharynx. Highly expressed in a number of tumors cells lines, such ovarian, colon, breast, lung and renal cells lines. Initially described as being exclusively transcribed in the epididymis

Images



Please note: All products are 'FOR RESEARCH USE ONLY. NOT FOR USE IN DIAGNOSTIC OR THERAPEUTIC PROCEDURES'.