

Carcino Embryonic Antigen CEA (CD66e) Rabbit mAb

Catalog # AP77244

Product Information

Application	WB, IHC-P, IF, ICC
Primary Accession	P06731
Reactivity	Human
Host	Rabbit
Clonality	Monoclonal Antibody
Isotype	IgG
Conjugate	Unconjugated
Immunogen	A synthesized peptide derived from human CEA(CD66e)
Purification	Affinity Chromatography
Calculated MW	76796

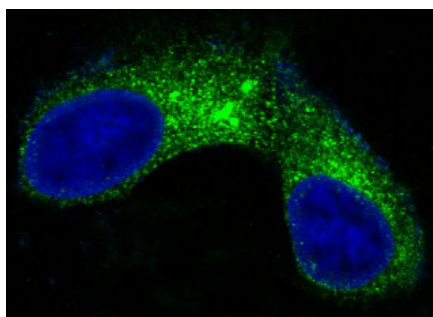
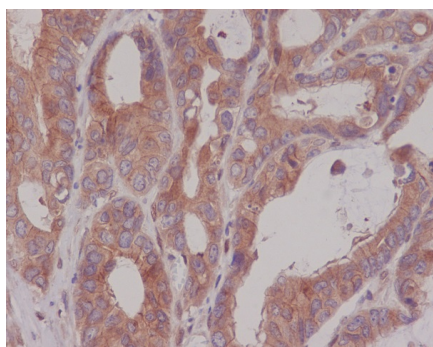
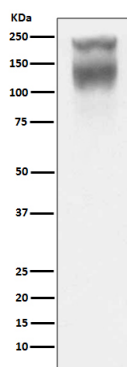
Additional Information

Gene ID	1048
Other Names	CEACAM5
Dilution	WB~~1/500-1/1000 IHC-P~~N/A IF~~1/50-1/200 ICC~~N/A
Format	Liquid in 10mM PBS, pH 7.4, 150mM sodium chloride, 0.05% BSA, 0.02% sodium azide and 50% glycerol.
Storage	Store at 4°C short term. Aliquot and store at -20°C long term. Avoid freeze/thaw cycles.

Protein Information

Name	CEACAM5 (HGNC:1817)
Function	Cell surface glycoprotein that plays a role in cell adhesion, intracellular signaling and tumor progression (PubMed: 10864933 , PubMed: 10910050 , PubMed: 2803308). Mediates homophilic and heterophilic cell adhesion with other carcinoembryonic antigen-related cell adhesion molecules, such as CEACAM6 (PubMed: 2803308). Plays a role as an oncogene by promoting tumor progression; induces resistance to anoikis of colorectal carcinoma cells (PubMed: 10910050).
Cellular Location	Cell membrane; Lipid-anchor, GPI-anchor; Extracellular side. Apical cell membrane. Cell surface Note=Localized to the apical glycocalyx surface
Tissue Location	Expressed in columnar epithelial and goblet cells of the colon (at protein level) (PubMed:10436421). Found in adenocarcinomas of endodermally derived digestive system epithelium and fetal colon.

Images



Please note: All products are 'FOR RESEARCH USE ONLY. NOT FOR USE IN DIAGNOSTIC OR THERAPEUTIC PROCEDURES'.