

Syndecan 1 Rabbit mAb

Catalog # AP77226

Product Information

Application	WB, IHC-P, IF, ICC
Primary Accession	P18827
Reactivity	Rat, Human, Mouse
Host	Rabbit
Clonality	Monoclonal Antibody
Isotype	IgG
Conjugate	Unconjugated
Immunogen	A synthesized peptide derived from human Syndecan 1
Purification	Affinity Chromatography
Calculated MW	32462

Additional Information

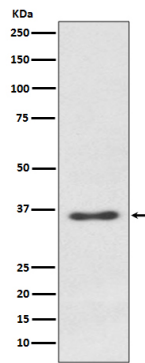
Gene ID	6382
Other Names	SDC1
Dilution	WB~~1/500-1/1000 IHC-P~~N/A IF~~1:50~200 ICC~~N/A
Format	Liquid in 10mM PBS, pH 7.4, 150mM sodium chloride, 0.05% BSA, 0.02% sodium azide and 50% glycerol.
Storage	Store at 4°C short term. Aliquot and store at -20°C long term. Avoid freeze/thaw cycles.

Protein Information

Name	SDC1 (HGNC:10658)
Synonyms	SDC
Function	Cell surface proteoglycan that contains both heparan sulfate and chondroitin sulfate and that links the cytoskeleton to the interstitial matrix (By similarity). Regulates exosome biogenesis in concert with SDCBP and PDCD6IP (PubMed: 22660413). Able to induce its own expression in dental mesenchymal cells and also in the neighboring dental epithelial cells via an MSX1-mediated pathway (By similarity).
Cellular Location	Membrane; Single-pass type I membrane protein. Secreted Secreted, extracellular exosome Note=Shedding of the ectodomain produces a soluble form
Tissue Location	Detected in placenta (at protein level) (PubMed:32337544). Detected in

fibroblasts (at protein level) (PubMed:36213313).

Images



Please note: All products are 'FOR RESEARCH USE ONLY. NOT FOR USE IN DIAGNOSTIC OR THERAPEUTIC PROCEDURES'.