

Drosha Rabbit mAb

Catalog # AP77208

Product Information

Application	WB, IHC-P, IF, FC, ICC
Primary Accession	Q9NRR4
Reactivity	Human
Host	Rabbit
Clonality	Monoclonal Antibody
Isotype	IgG
Conjugate	Unconjugated
Immunogen	A synthesized peptide derived from human Drosha
Purification	Affinity Chromatography
Calculated MW	159316

Additional Information

Gene ID	29102
Other Names	DROSHA
Dilution	WB~~1/500-1/1000 IHC-P~~N/A IF~~1:50~200 FC~~1:10~50 ICC~~N/A
Format	Liquid in 10mM PBS, pH 7.4, 150mM sodium chloride, 0.05% BSA, 0.02% sodium azide and 50% glycerol.
Storage	Store at 4°C short term. Aliquot and store at -20°C long term. Avoid freeze/thaw cycles.

Protein Information

Name	DROSHA
Synonyms	RN3, RNASE3L, RNASEN
Function	Ribonuclease III double-stranded (ds) RNA-specific endoribonuclease that is involved in the initial step of microRNA (miRNA) biogenesis. Component of the microprocessor complex that is required to process primary miRNA transcripts (pri-miRNAs) to release precursor miRNA (pre-miRNA) in the nucleus. Within the microprocessor complex, DROSHA cleaves the 3' and 5' strands of a stem-loop in pri- miRNAs (processing center 11 bp from the dsRNA-ssRNA junction) to release hairpin-shaped pre-miRNAs that are subsequently cut by the cytoplasmic DICER to generate mature miRNAs. Involved also in pre-rRNA processing. Cleaves double-strand RNA and does not cleave single-strand RNA. Involved in the formation of GW bodies. Plays a role in growth homeostasis in response to autophagy in motor neurons (By similarity).

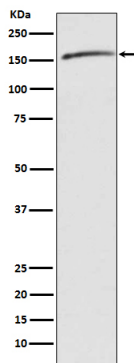
Cellular Location

Nucleus. Nucleus, nucleolus. Cytoplasm {ECO:0000250|UniProtKB:Q5HZJ0}.
Note=A fraction is translocated to the nucleolus during the S phase of the cell cycle. Localized in GW bodies (GWBs), also known as P-bodies.

Tissue Location

Ubiquitous..

Images



Please note: All products are 'FOR RESEARCH USE ONLY. NOT FOR USE IN DIAGNOSTIC OR THERAPEUTIC PROCEDURES'.