

Butyrylcholinesterase Rabbit mAb

Catalog # AP77198

Product Information

| | |
|--------------------------|---|
| Application | WB |
| Primary Accession | P06276 |
| Reactivity | Human |
| Host | Rabbit |
| Clonality | Monoclonal Antibody |
| Isotype | IgG |
| Conjugate | Unconjugated |
| Immunogen | A synthesized peptide derived from human BCHE |
| Purification | Affinity Chromatography |
| Calculated MW | 68418 |

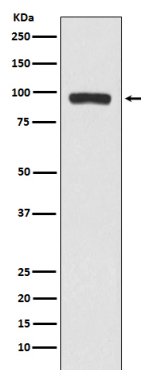
Additional Information

| | |
|--------------------|--|
| Gene ID | 590 |
| Other Names | BCHE |
| Dilution | WB~~1/500-1/1000 |
| Format | Liquid in 10mM PBS, pH 7.4, 150mM sodium chloride, 0.05% BSA, 0.02% sodium azide and 50% glycerol. |
| Storage | Store at 4°C short term. Aliquot and store at -20°C long term. Avoid freeze/thaw cycles. |

Protein Information

| | |
|--------------------------|--|
| Name | BCHE |
| Synonyms | CHE1 |
| Function | Esterase with broad substrate specificity. Contributes to the inactivation of the neurotransmitter acetylcholine. Can degrade neurotoxic organophosphate esters. |
| Cellular Location | Secreted |
| Tissue Location | Detected in blood plasma (at protein level). Present in most cells except erythrocytes |

Images



Please note: All products are 'FOR RESEARCH USE ONLY. NOT FOR USE IN DIAGNOSTIC OR THERAPEUTIC PROCEDURES'.