

MBD1 Rabbit mAb

Catalog # AP77190

Product Information

Application	WB, IHC-P, IF, ICC, IP
Primary Accession	Q9UIS9
Reactivity	Human
Host	Rabbit
Clonality	Monoclonal Antibody
Isotype	IgG
Conjugate	Unconjugated
Immunogen	A synthesized peptide derived from human MBD1
Purification	Affinity Chromatography
Calculated MW	66607

Additional Information

Gene ID	4152
Other Names	MBD1
Dilution	WB~~1/500-1/1000 IHC-P~~N/A IF~~1:50~200 ICC~~N/A IP~~N/A
Format	Liquid in 10mM PBS, pH 7.4, 150mM sodium chloride, 0.05% BSA, 0.02% sodium azide and 50% glycerol.
Storage	Store at 4°C short term. Aliquot and store at -20°C long term. Avoid freeze/thaw cycles.

Protein Information

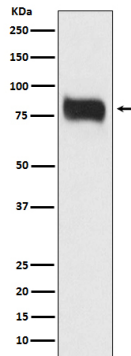
Name	MBD1 (HGNC:6916)
Synonyms	CXXC3, PCM1
Function	Transcriptional repressor that binds CpG islands in promoters where the DNA is methylated at position 5 of cytosine within CpG dinucleotides. Binding is abolished by the presence of 7-mG that is produced by DNA damage by methylmethanesulfonate (MMS). Acts as transcriptional repressor and plays a role in gene silencing by recruiting ATF7IP, which in turn recruits factors such as the histone methyltransferase SETDB1. Probably forms a complex with SETDB1 and ATF7IP that represses transcription and couples DNA methylation and histone 'Lys-9' trimethylation. Isoform 1 and isoform 2 can also repress transcription from unmethylated promoters.
Cellular Location	Nucleus. Nucleus matrix. Nucleus speckle Chromosome Note=Nuclear, in a punctate pattern (PubMed:12711603). Associated with euchromatic regions of

the chromosomes, with pericentromeric regions on chromosome 1 and with telomeric regions from several chromosomes (PubMed:10454587, PubMed:10648624).

Tissue Location

Widely expressed..

Images



Please note: All products are 'FOR RESEARCH USE ONLY. NOT FOR USE IN DIAGNOSTIC OR THERAPEUTIC PROCEDURES'.