

Chromogranin B Rabbit mAb

Catalog # AP77180

Product Information

Application	WB
Primary Accession	P05060
Reactivity	Rat, Human, Mouse
Host	Rabbit
Clonality	Monoclonal Antibody
Isotype	IgG
Conjugate	Unconjugated
Immunogen	A synthesized peptide derived from human Chromogranin B
Purification	Affinity Chromatography
Calculated MW	78276

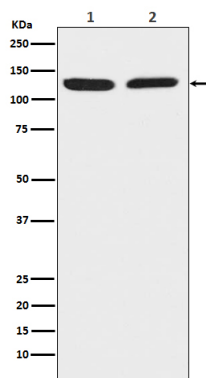
Additional Information

Gene ID	1114
Other Names	CHGB
Dilution	WB~~1/500-1/1000
Format	Liquid in 10mM PBS, pH 7.4, 150mM sodium chloride, 0.05% BSA, 0.02% sodium azide and 50% glycerol.
Storage	Store at 4°C short term. Aliquot and store at -20°C long term. Avoid freeze/thaw cycles.

Protein Information

Name	CHGB
Synonyms	SCG1
Function	Secretogranin-1 is a neuroendocrine secretory granule protein, which may be the precursor for other biologically active peptides.
Cellular Location	Secreted. Note=Neuroendocrine and endocrine secretory granules
Tissue Location	Detected in cerebrospinal fluid and urine (at protein level) (PubMed:25326458, PubMed:37453717). Expressed in the adrenal medulla, and in pheochromocytoma. Not expressed in liver

Images



Please note: All products are 'FOR RESEARCH USE ONLY. NOT FOR USE IN DIAGNOSTIC OR THERAPEUTIC PROCEDURES'.