

IQGAP1 Rabbit mAb

Catalog # AP77165

Product Information

Application	WB, IHC-P, IF, FC, ICC
Primary Accession	P46940
Reactivity	Human, Mouse
Host	Rabbit
Clonality	Monoclonal Antibody
Isotype	IgG
Conjugate	Unconjugated
Immunogen	A synthesized peptide derived from human IQGAP1
Purification	Affinity Chromatography
Calculated MW	189252

Additional Information

Gene ID	8826
Other Names	IQGAP1
Dilution	WB~~1/500-1/1000 IHC-P~~N/A IF~~1:50~200 FC~~1:10~50 ICC~~N/A
Format	Liquid in 10mM PBS, pH 7.4, 150mM sodium chloride, 0.05% BSA, 0.02% sodium azide and 50% glycerol.
Storage	Store at 4°C short term. Aliquot and store at -20°C long term. Avoid freeze/thaw cycles.

Protein Information

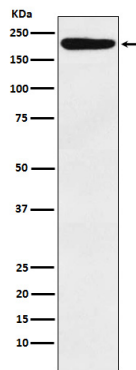
Name	IQGAP1
Synonyms	KIAA0051
Function	Plays a crucial role in regulating the dynamics and assembly of the actin cytoskeleton. Recruited to the cell cortex by interaction with ILK which allows it to cooperate with its effector DIAPH1 to locally stabilize microtubules and allow stable insertion of caveolae into the plasma membrane (By similarity). Binds to activated CDC42 but does not stimulate its GTPase activity. Associates with calmodulin. May promote neurite outgrowth (PubMed: 15695813). May play a possible role in cell cycle regulation by contributing to cell cycle progression after DNA replication arrest (PubMed: 20883816).
Cellular Location	Cell membrane. Nucleus. Cytoplasm. Cytoplasm, cell cortex {ECO:0000250 UniProtKB:Q9JKF1}. Apical cell membrane. Basolateral cell

membrane {ECO:0000250|UniProtKB:Q9JKF1}. Note=Subcellular distribution is regulated by the cell cycle, nuclear levels increase at G1/S phase (PubMed:20883816).

Tissue Location

Expressed in the placenta, lung, and kidney (PubMed:8051149). A lower level expression is seen in the heart, liver, skeletal muscle and pancreas (PubMed:8051149)

Images



Please note: All products are 'FOR RESEARCH USE ONLY. NOT FOR USE IN DIAGNOSTIC OR THERAPEUTIC PROCEDURES'.