

# Gephyrin Rabbit mAb

Catalog # AP77113

## Product Information

<b>Application</b>	WB, IHC-P, IF, ICC
<b>Primary Accession</b>	<a href="#">Q9NQX3</a>
<b>Reactivity</b>	Rat, Human, Mouse
<b>Host</b>	Rabbit
<b>Clonality</b>	Monoclonal Antibody
<b>Isotype</b>	IgG
<b>Conjugate</b>	Unconjugated
<b>Immunogen</b>	A synthesized peptide derived from human Gephyrin
<b>Purification</b>	Affinity Chromatography
<b>Calculated MW</b>	79748

## Additional Information

<b>Gene ID</b>	10243
<b>Other Names</b>	GPHN
<b>Dilution</b>	WB~~1/500-1/1000 IHC-P~~N/A IF~~1:50~200 ICC~~N/A
<b>Format</b>	Liquid in 10mM PBS, pH 7.4, 150mM sodium chloride, 0.05% BSA, 0.02% sodium azide and 50% glycerol.
<b>Storage</b>	Store at 4°C short term. Aliquot and store at -20°C long term. Avoid freeze/thaw cycles.

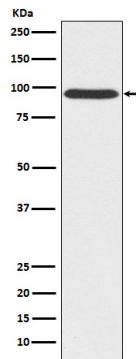
## Protein Information

<b>Name</b>	GPHN ( <a href="#">HGNC:15465</a> )
<b>Synonyms</b>	GPH, KIAA1385
<b>Function</b>	Microtubule-associated protein involved in membrane protein- cytoskeleton interactions. It is thought to anchor the inhibitory glycine receptor (GLYR) to subsynaptic microtubules (By similarity). Acts as a major instructive molecule at inhibitory synapses, where it also clusters GABA type A receptors (PubMed: <a href="#">25025157</a> , PubMed: <a href="#">26613940</a> ).
<b>Cellular Location</b>	Postsynaptic cell membrane; Lipid- anchor; Cytoplasmic side. Cell membrane {ECO:0000250 UniProtKB:Q03555}; Lipid-anchor {ECO:0000250 UniProtKB:Q03555}; Cytoplasmic side {ECO:0000250 UniProtKB:Q03555}. Cytoplasm, cytosol. Cytoplasm, cytoskeleton {ECO:0000250 UniProtKB:Q03555}. Cell projection, dendrite. Postsynaptic density {ECO:0000250 UniProtKB:Q8BUV3}. Note=Cytoplasmic

face of glycinergic postsynaptic membranes (By similarity). Forms clusters at synapses (PubMed:25025157). {ECO:0000250|UniProtKB:Q03555, ECO:0000269|PubMed:25025157}

## Images

---



Please note: All products are 'FOR RESEARCH USE ONLY. NOT FOR USE IN DIAGNOSTIC OR THERAPEUTIC PROCEDURES'.