

# GOLPH4 Rabbit mAb

Catalog # AP77110

## Product Information

---

<b>Application</b>	WB, IHC-P
<b>Primary Accession</b>	<a href="#">O00461</a>
<b>Reactivity</b>	Human
<b>Host</b>	Rabbit
<b>Clonality</b>	Monoclonal Antibody
<b>Isotype</b>	IgG
<b>Conjugate</b>	Unconjugated
<b>Immunogen</b>	A synthesized peptide derived from human GOLPH4
<b>Purification</b>	Affinity Chromatography
<b>Calculated MW</b>	81880

## Additional Information

---

<b>Gene ID</b>	27333
<b>Other Names</b>	GOLIM4
<b>Dilution</b>	WB~~1/500-1/1000 IHC-P~~N/A
<b>Format</b>	Liquid in 10mM PBS, pH 7.4, 150mM sodium chloride, 0.05% BSA, 0.02% sodium azide and 50% glycerol.
<b>Storage</b>	Store at 4°C short term. Aliquot and store at -20°C long term. Avoid freeze/thaw cycles.

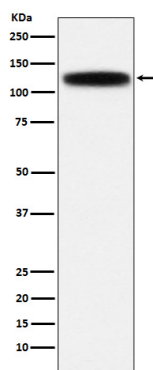
## Protein Information

---

<b>Name</b>	GOLIM4
<b>Synonyms</b>	GIMPC, GOLPH4, GPP130
<b>Function</b>	Plays a role in endosome to Golgi protein trafficking; mediates protein transport along the late endosome-bypass pathway from the early endosome to the Golgi.
<b>Cellular Location</b>	Golgi apparatus, Golgi stack membrane; Single- pass type II membrane protein. Endosome membrane; Single-pass type II membrane protein. Membrane; Lipid-anchor Note=Localizes to cis and medial Golgi cisternae. Probably cycles between early Golgi and distal compartments like endosome

## Images

---



Please note: All products are 'FOR RESEARCH USE ONLY. NOT FOR USE IN DIAGNOSTIC OR THERAPEUTIC PROCEDURES'.