

DIAPH1 Rabbit mAb

Catalog # AP77080

Product Information

Application	WB, IHC-P, IF, ICC
Primary Accession	O60610
Reactivity	Rat, Human, Mouse
Host	Rabbit
Clonality	Monoclonal Antibody
Isotype	IgG
Conjugate	Unconjugated
Immunogen	A synthesized peptide derived from human DIAPH1
Purification	Affinity Chromatography
Calculated MW	141347

Additional Information

Gene ID	1729
Other Names	DIAPH1
Dilution	WB~~1/500-1/1000 IHC-P~~N/A IF~~1:50~200 ICC~~N/A
Format	Liquid in 10mM PBS, pH 7.4, 150mM sodium chloride, 0.05% BSA, 0.02% sodium azide and 50% glycerol.
Storage	Store at 4°C short term. Aliquot and store at -20°C long term. Avoid freeze/thaw cycles.

Protein Information

Name	DIAPH1
Synonyms	DIAP1
Function	Actin nucleation and elongation factor required for the assembly of F-actin structures, such as actin cables and stress fibers (By similarity). Binds to the barbed end of the actin filament and slows down actin polymerization and depolymerization (By similarity). Required for cytokinesis, and transcriptional activation of the serum response factor (By similarity). DFR proteins couple Rho and Src tyrosine kinase during signaling and the regulation of actin dynamics (By similarity). Functions as a scaffold protein for MAPRE1 and APC to stabilize microtubules and promote cell migration (By similarity). Has neurite outgrowth promoting activity. Acts in a Rho-dependent manner to recruit PFY1 to the membrane (By similarity). In hair cells, it may play a role in the regulation of actin polymerization in hair cells (PubMed: 20937854 , PubMed: 21834987 , PubMed: 26912466). The MEMO1-RHOA- DIAPH1 signaling

pathway plays an important role in ERBB2-dependent stabilization of microtubules at the cell cortex (PubMed:[20937854](#), PubMed:[21834987](#)). It controls the localization of APC and CLASP2 to the cell membrane, via the regulation of GSK3B activity (PubMed:[20937854](#), PubMed:[21834987](#)). In turn, membrane-bound APC allows the localization of the MACF1 to the cell membrane, which is required for microtubule capture and stabilization (PubMed:[20937854](#), PubMed:[21834987](#)). Plays a role in the regulation of cell morphology and cytoskeletal organization. Required in the control of cell shape (PubMed:[20937854](#), PubMed:[21834987](#)). Plays a role in brain development (PubMed:[24781755](#)). Also acts as an actin nucleation and elongation factor in the nucleus by promoting nuclear actin polymerization inside the nucleus to drive serum-dependent SRF-MRTFA activity (By similarity).

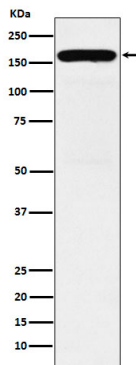
Cellular Location

Cell membrane {ECO:0000250|UniProtKB:O08808}. Cell projection, ruffle membrane {ECO:0000250|UniProtKB:O08808} Cytoplasm, cytoskeleton. Cytoplasm, cytoskeleton, microtubule organizing center, centrosome. Cytoplasm, cytoskeleton, spindle. Cytoplasm {ECO:0000250|UniProtKB:O08808}. Nucleus {ECO:0000250|UniProtKB:O08808} Note=Membrane ruffles, especially at the tip of ruffles, of motile cells. {ECO:0000250|UniProtKB:O08808}

Tissue Location

Expressed in brain, heart, placenta, lung, kidney, pancreas, liver, skeletal muscle and cochlea. Expressed in platelets (PubMed:26912466).

Images



Please note: All products are 'FOR RESEARCH USE ONLY. NOT FOR USE IN DIAGNOSTIC OR THERAPEUTIC PROCEDURES'.