

# ODC1 Rabbit mAb

Catalog # AP77065

## Product Information

---

<b>Application</b>	WB
<b>Primary Accession</b>	<a href="#">P11926</a>
<b>Reactivity</b>	Rat, Human, Mouse
<b>Host</b>	Rabbit
<b>Clonality</b>	Monoclonal Antibody
<b>Isotype</b>	IgG
<b>Conjugate</b>	Unconjugated
<b>Immunogen</b>	A synthesized peptide derived from human Ornithine Decarboxylase
<b>Purification</b>	Affinity Purified
<b>Calculated MW</b>	51148

## Additional Information

---

<b>Gene ID</b>	4953
<b>Other Names</b>	ODC1
<b>Dilution</b>	WB~~1/500-1/1000
<b>Format</b>	Liquid in 10mM PBS, pH 7.4, 150mM sodium chloride, 0.05% BSA, 0.02% sodium azide and 50% glycerol.
<b>Storage</b>	Store at 4°C short term. Aliquot and store at -20°C long term. Avoid freeze/thaw cycles.

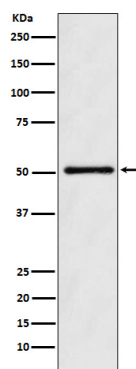
## Protein Information

---

<b>Name</b>	ODC1
<b>Function</b>	Catalyzes the first and rate-limiting step of polyamine biosynthesis that converts ornithine into putrescine, which is the precursor for the polyamines, spermidine and spermine. Polyamines are essential for cell proliferation and are implicated in cellular processes, ranging from DNA replication to apoptosis.

## Images

---



Please note: All products are 'FOR RESEARCH USE ONLY. NOT FOR USE IN DIAGNOSTIC OR THERAPEUTIC PROCEDURES'.