

Lactate Dehydrogenase B Rabbit mAb

Catalog # AP77043

Product Information

Application	WB, IHC-P, IF, FC, ICC, IP
Primary Accession	P07195
Reactivity	Human
Host	Rabbit
Clonality	Monoclonal Antibody
Isotype	IgG
Conjugate	Unconjugated
Immunogen	A synthesized peptide derived from human LDHB
Purification	Affinity Purified
Calculated MW	36638

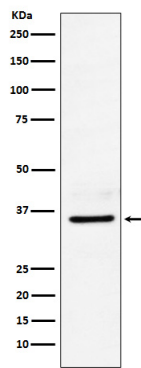
Additional Information

Gene ID	3945
Other Names	LDHB
Dilution	WB~~1/500-1/1000 IHC-P~~N/A IF~~1:50~200 FC~~1:10~50 ICC~~N/A IP~~N/A
Format	Liquid in 10mM PBS, pH 7.4, 150mM sodium chloride, 0.05% BSA, 0.02% sodium azide and 50% glycerol.
Storage	Store at 4°C short term. Aliquot and store at -20°C long term. Avoid freeze/thaw cycles.

Protein Information

Name	LDHB
Function	Interconverts simultaneously and stereospecifically pyruvate and lactate with concomitant interconversion of NADH and NAD(+).
Cellular Location	Cytoplasm. Mitochondrion inner membrane; Peripheral membrane protein
Tissue Location	Predominantly expressed in aerobic tissues such as cardiac muscle.

Images



Please note: All products are 'FOR RESEARCH USE ONLY. NOT FOR USE IN DIAGNOSTIC OR THERAPEUTIC PROCEDURES'.