

BACH1 Rabbit mAb

Catalog # AP77039

Product Information

Application	WB
Primary Accession	Q9BX63
Reactivity	Human
Host	Rabbit
Clonality	Monoclonal Antibody
Isotype	IgG
Conjugate	Unconjugated
Immunogen	A synthesized peptide derived from human BACH1/BRIP1
Purification	Affinity Purified
Calculated MW	140867

Additional Information

Gene ID	83990
Other Names	BRIP1
Dilution	WB~~1/500-1/1000
Format	Liquid in 10mM PBS, pH 7.4, 150mM sodium chloride, 0.05% BSA, 0.02% sodium azide and 50% glycerol.
Storage	Store at 4°C short term. Aliquot and store at -20°C long term. Avoid freeze/thaw cycles.

Protein Information

Name	BRIP1 (HGNC:20473)
Function	DNA-dependent ATPase and 5'-3' DNA helicase required for the maintenance of chromosomal stability (PubMed: 11301010 , PubMed: 14983014 , PubMed: 16116421 , PubMed: 16153896 , PubMed: 17596542 , PubMed: 36608669). Acts late in the Fanconi anemia pathway, after FANCD2 ubiquitination (PubMed: 14983014 , PubMed: 16153896). Involved in the repair of DNA double-strand breaks by homologous recombination in a manner that depends on its association with BRCA1 (PubMed: 14983014 , PubMed: 16153896). Involved in the repair of abasic sites at replication forks by promoting the degradation of DNA-protein cross-links: acts by catalyzing unfolding of HMCES DNA-protein cross-link via its helicase activity, exposing the underlying DNA and enabling cleavage of the DNA- protein adduct by the SPRTN metalloprotease (PubMed: 16116421 , PubMed: 36608669). Can unwind RNA:DNA substrates (PubMed: 14983014). Unwinds G-quadruplex DNA; unwinding requires a 5'-single stranded tail

(PubMed:[18426915](#), PubMed:[20639400](#)).

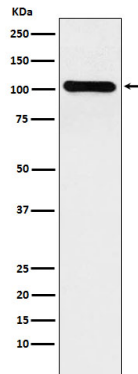
Cellular Location

Nucleus. Cytoplasm

Tissue Location

Ubiquitously expressed, with highest levels in testis.

Images



Please note: All products are 'FOR RESEARCH USE ONLY. NOT FOR USE IN DIAGNOSTIC OR THERAPEUTIC PROCEDURES'.