

# SERPING1 Rabbit mAb

Catalog # AP77012

## Product Information

---

<b>Application</b>	WB, IP
<b>Primary Accession</b>	<a href="#">P05155</a>
<b>Reactivity</b>	Rat, Human, Mouse
<b>Host</b>	Rabbit
<b>Clonality</b>	Monoclonal Antibody
<b>Calculated MW</b>	55154

## Additional Information

---

<b>Gene ID</b>	710
<b>Other Names</b>	SERPING1
<b>Dilution</b>	WB~~1/500-1/1000 IP~~N/A
<b>Format</b>	Liquid

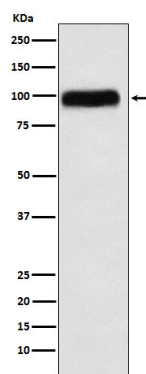
## Protein Information

---

<b>Name</b>	SERPING1
<b>Synonyms</b>	C1IN, C1NH
<b>Function</b>	Serine protease inhibitor, which acts as a regulator of the classical complement pathway (PubMed: <a href="#">10946292</a> , PubMed: <a href="#">11527969</a> , PubMed: <a href="#">3458172</a> , PubMed: <a href="#">6416294</a> ). Forms a proteolytically inactive stoichiometric complex with the C1r or C1s proteases (PubMed: <a href="#">10946292</a> , PubMed: <a href="#">3458172</a> , PubMed: <a href="#">6416294</a> ). May also regulate blood coagulation, fibrinolysis and the generation of kinins (PubMed: <a href="#">8495195</a> ). Very efficient inhibitor of FXIIa. Inhibits chymotrypsin and kallikrein (PubMed: <a href="#">8495195</a> ).
<b>Cellular Location</b>	Secreted

## Images

---



Please note: All products are 'FOR RESEARCH USE ONLY. NOT FOR USE IN DIAGNOSTIC OR THERAPEUTIC PROCEDURES'.