

Mast Cell Chymase Rabbit mAb

Catalog # AP76981

Product Information

Application	WB, IHC-P
Primary Accession	P23946
Reactivity	Human
Host	Rabbit
Clonality	Monoclonal Antibody
Isotype	IgG
Conjugate	Unconjugated
Immunogen	A synthesized peptide derived from human Mast Cell Chymase
Purification	Affinity Chromatography
Calculated MW	27325

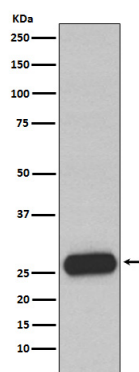
Additional Information

Gene ID	1215
Other Names	CMA1
Dilution	WB~~1/500-1/1000 IHC-P~~N/A
Format	Liquid in 10mM PBS, pH 7.4, 150mM sodium chloride, 0.05% BSA, 0.02% sodium azide and 50% glycerol.
Storage	Store at 4°C short term. Aliquot and store at -20°C long term. Avoid freeze/thaw cycles.

Protein Information

Name	CMA1
Synonyms	CYH, CYM
Function	Major secreted protease of mast cells with suspected roles in vasoactive peptide generation, extracellular matrix degradation, and regulation of gland secretion.
Cellular Location	Secreted. Cytoplasmic granule. Note=Mast cell granules
Tissue Location	Mast cells in lung, heart, skin and placenta. Expressed in both normal skin and in urticaria pigmentosa lesions

Images



Please note: All products are 'FOR RESEARCH USE ONLY. NOT FOR USE IN DIAGNOSTIC OR THERAPEUTIC PROCEDURES'.